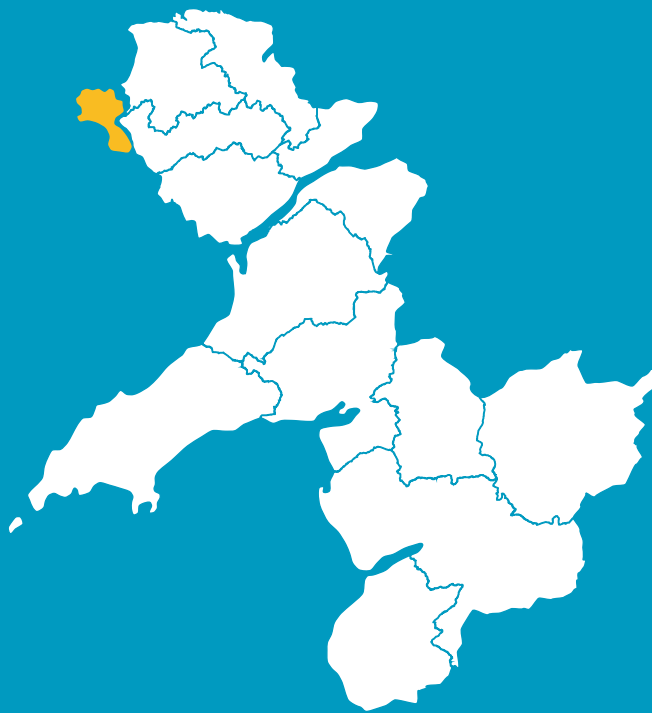


IT'S YOUR AREA. WHAT'S IMPORTANT?

CAERGYBI AND YNYS CYBI AREA



WELL-BEING ASSESSMENT GWYNEDD AND MÔN

WANT
TO HAVE
YOUR
SAY?

The new act has established Public Services Boards for each local authority area to make sure that public bodies work together to create a better future for the people of Wales.

For Gwynedd and Anglesey, both Boards have decided to work together, and it's a partnership which includes the local authorities, the fire and rescue service, the health service and Natural Resources Wales.

The Gwynedd and Môn Public Services Board has divided the whole area into 14 smaller areas. Research has been carried out on behalf of the Board on each of the 14 areas to learn and understand more about the well-being of those areas. As well as the data available, we also want to know what you think about your area and community – what's important to you, what's good and what needs improving. **You will have an opportunity to have your say by attending one of the local drop-in sessions or in an online questionnaire. More information and the dates of all local sessions are on www.GwyneddandMonWell-being.org.**

This consultation period ends on December 31st 2016. The hope is that the Board will then have a clearer picture of our communities, what's important to the people in this part of Wales, and how partners can work together to plan services for the future.

THE WELL-BEING OF
FUTURE GENERATIONS
[WALES] ACT CAME INTO
FORCE ON 1ST APRIL
2016. THE PURPOSE OF
THE ACT IS TO IMPROVE
THE **SOCIAL,
ECONOMIC,
ENVIRONMENTAL
AND CULTURAL**
WELL-BEING OF WALES.

THIS IS THE
INFORMATION WE HAVE
COLLECTED ON THE
CAERGYBI AND YNYS
CYBI AREA SO FAR.
DO YOU RECOGNISE
THIS PICTURE OF YOUR
AREA?



WHO ARE THE PEOPLE OF CAERGYBI AND YNYS CYBI?

13,731 people live in the Caergybi and Ynys Cybi area – this is around **20%** of Anglesey's population.

Compared to the rest of the island, there are more children and young people up to 34 years old in the Caergybi and Ynys Cybi area, and less people over 50. The area's age pattern is more similar to the pattern across the rest of Wales than Anglesey.

The number of people living in this area has **dropped by 5%** between 1981 and 2011. This is different to the situation in Anglesey and Wales over the same period, where there has been an increase in population – 5% in Anglesey and 11% throughout Wales.

But, the population of every age group has not fallen. The number of **people over 80 in the area has more than doubled in 30 years**. Compared to this the number of children under 15 years old has dropped by 33%.

This pattern is expected to continue over the next 20 years with an 80% increase in the number of people over 80 years old across Anglesey – but it's likely the population under 16 years old will fall by 12%.

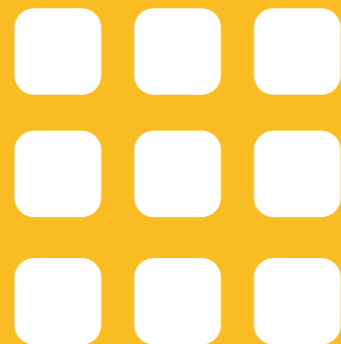
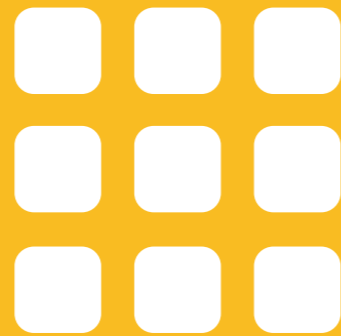
LANGUAGE

According to the 2011 Census, **42%** can speak Welsh in Caergybi and Ynys Cybi – this is the lowest percentage of all the areas on Anglesey. Numbers have decreased by 10% over the last thirty years, which is substantially more than the 5% decline across the whole of Anglesey over the same period.

Recent figures show that 46% speak Welsh every day on Anglesey, compared to 11% across Wales.

80%
INCREASE
AGE 80+

2016
POPULATION OF
ANGLESEY
70,000



2036
POPULATION OF
ANGLESEY
68,000



HOW GREEN IS THE AREA?

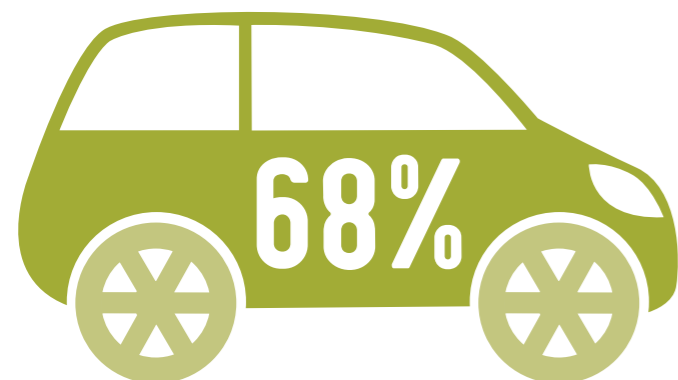
Recycling rates have risen in Anglesey over the last 4 years. By now **59.5%** of waste collected from houses, business and recycling centres in Anglesey is re-used or recycled. This includes bio waste materials which are composted.

The fly tipping rate is higher on Anglesey than the rest of Wales – with 25.3 cases per 1000 head of population reported, compared to 10.2.

Carbon footprint – information shows that **68%** of homes in Caergybi and Ynys Cybi own at least **one** car, compared with **82%** in Anglesey as a whole and **77%** in Wales. Carbon emissions per head of the population for Anglesey are **6.7kt CO₂** which is slightly higher than the Wales level of **6.6kt CO₂**.

Climate change causes the sea level to rise which contributes to the risk of flood in the area. In Anglesey, around **970** properties are at risk of floods in 4 areas which have been identified as being in danger of severe flooding. One of these 4 areas is Trearddur Bay on Ynys Cybi.

In the Caergybi and Ynys Cybi around **100** homes are under threat of inland flooding by rivers in the area.



CLEAN STREETS?

The cleanliness of our streets is inspected annually by Keep Wales Tidy. Of the streets inspected in the area none achieved Grade A, which is no rubbish or waste. There were **6%** with no more than three small items of rubbish Grade (B+) and **94%** generally had no rubbish or waste on them, excluding some small items (Grade B). On the whole streets across Anglesey tend to be Grade B or B+.



GRADE B+ STREETS
6%

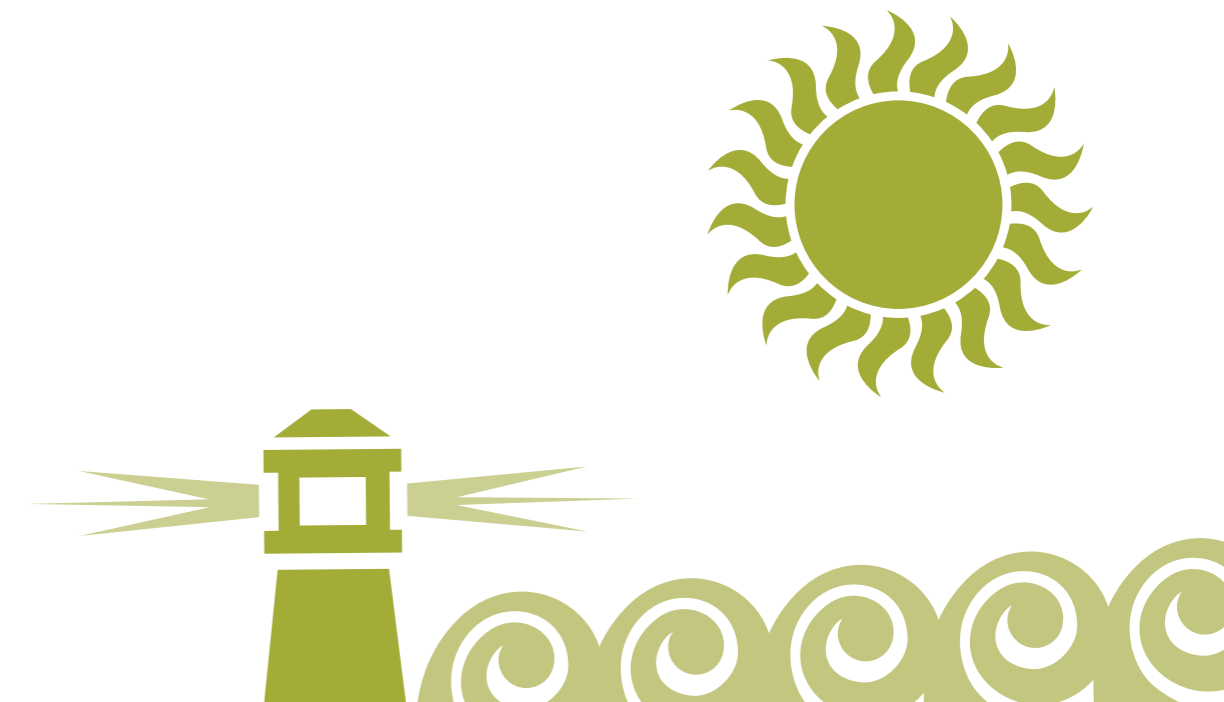
THE NATURAL ENVIRONMENT

There are many important habitats on Anglesey which include low and coastal heathland, fenlands, woodlands, and ancient hedgerows, as well as some of the largest sand dunes in Wales. This is one of the strongholds for some rare species, such as the Great Crested Newt, the Red Squirrel, Otter, Water Vole and Chough. Protection plans are in place for each one of them.

There is an RSPB reserve at South Stack which has varied habitats of heathland, farmland land, cliffs and caves. The area is managed in order to protect the large variety of sea birds and rare plants here.

Holyhead's Breakwater Country Park is also located in the area on the site of an old quarry.

Porth Dafarch and **Trearddur Bay** beaches have been awarded a Blue Flag which means they are amongst the best beaches in the world.



SOCIAL

GOOD HEALTH?

In the Caergybi and Ynys Cybi area around **1,400** people are registered per GP. This is the same as for the rest of Anglesey and lower than the all-Wales figure of **1,600**.

For the Holyhead postcode, the ambulance response time to a call where there is threat to life is **5:33 minutes** on average.

There is no specific information available on the health of the population of Caergybi and Ynys Cybi. The statistics included in this booklet are for the whole of Anglesey – but give an indication of the health conditions and trends in the county.

Men's life expectancy at birth on Anglesey is **78.7 years**, whilst a woman can expect to live until she is **83 years old**.

The gap between male and female life expectancy at birth, between those who are most and least privileged in our communities, is substantially less in Anglesey than for Wales as a whole. The gap is as much as 75% less for women and 30% for men.

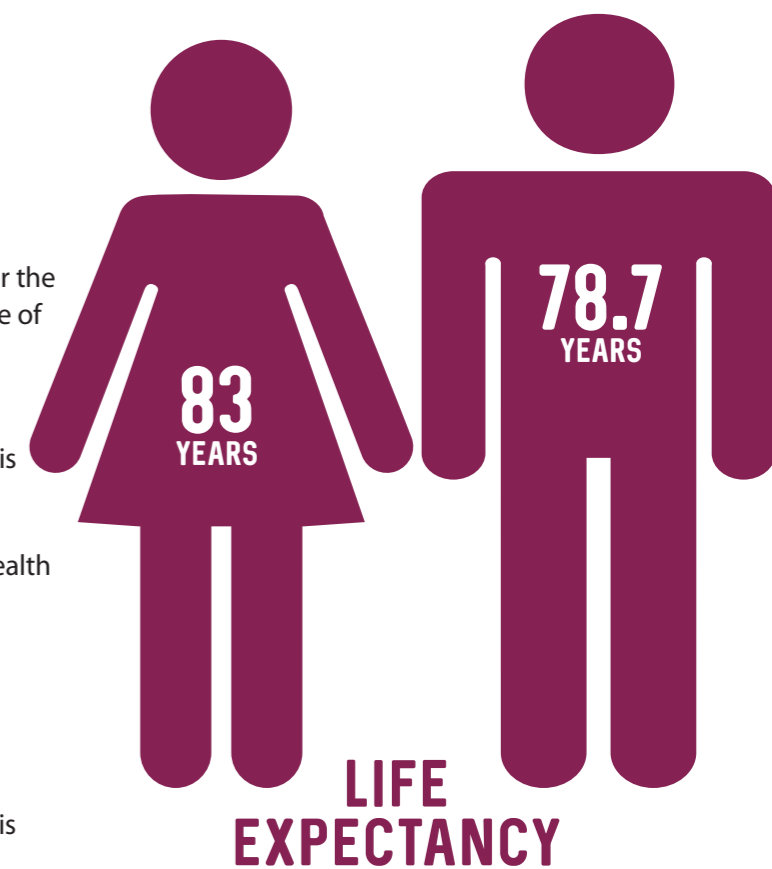
58% of adults on Anglesey are overweight or obese – this is the same as the population of the whole of Wales. The percentage on the island has increased by 3% since 2011, whilst Wales' figure has stayed the same.

On Anglesey, 32% of children aged 4-5 years are overweight or obese - this is higher than the Wales figure of 26%.

Other factors that affect our health are smoking and drinking alcohol. **22%** of people who are 16 or older on Anglesey say they smoke and **38%** of people drink more than **5** small glasses of wine, or around 3 pints of beer, on the heaviest drinking day of the week. This is similar to the rest of Wales and has been consistent over recent years.

The suicide rate on Anglesey of 10.4 for every 100,000 of the population, is lower than the Wales suicide rate which is 12.2 a year.

On Anglesey the teenage pregnancy rate for under 18s is 23.6 per 1000 females aged 15-17. This is similar to the Wales figure.



STAYING SAFE



The crime rate for Caergybi and Ynys Cybi per 1,000 head of the population has fallen from **194.3** to **148.3** between 2011 and 2015. But, the crime rate in this area is the highest on Anglesey.

Anti-social behaviour is down but still accounts for **34%** of all crime in the area.

81% of people believe it is safe for children to play outside in Anglesey and Gwynedd. The corresponding figure for Wales is **64%**.

In Caergybi and Ynys Cybi there are **79** instances of fire every year on average, which is higher than all other areas across Anglesey. Around **42%** of these cases are started deliberately, the highest percentage across the island.

79
FIRES

42%
DELIBERATE

KEEPING IN TOUCH

The percentage with access to broadband is increasing annually – only **2%** of properties on Anglesey now have no access at all.

32% of homes in Caergybi and Ynys Cybi are without a car or van – this is a lot higher than the rest of Anglesey, where **18%** of homes are without a car or van.

According to national data, Trearddur Bay is amongst the 10% of areas in Wales where it takes most time to travel to basic services such as a pharmacy, grocery shop and a doctor's surgery.

Loneliness is a condition that affects all ages, but older people are more vulnerable. In the Caergybi and Ynys Cybi area, considering the different factors that contribute to loneliness, there is a higher risk for people over 65 years in the London Road, Morawelon and Porth y Felin areas. The risk is lower in the Trearddur area.

HELPING EACH OTHER

11% of the population in Caergybi and Ynys Cybi area provide at least one hour a week of unpaid care. This figure is similar to other areas in Anglesey and the rest of Wales.



JOBS AND THE ECONOMY

Using the measure of how strong and productive the economy is (Gross Value Added) Anglesey's economy is generally weaker than that of Wales. But, the economy of the whole of Wales is weak compared to the United Kingdom.

32% of people in work and with no qualifications in Caergybi and Ynys Cybi are employed in elementary occupations e.g. cleaning, waste collection, farm or factory work. Also, of those without qualifications, a large proportion (15%) work in customer services roles – this compares with a figure of only 10% for the rest of the county.

Also, of working age people in Caergybi and Ynys Cybi with no qualifications, **48%** are economically inactive – this means that they don't work and are not looking for work for various reasons.

The highest percentage of the working population in Caergybi and Ynys Cybi area work in the care, leisure and other services sector. The **31%** with a degree or similar qualification work in the professional field, this reflects the trend across Wales.

The percentage of 16-64 year olds claiming Jobseeker's Allowance in Caergybi and Ynys Cybi is much higher than the figure for Anglesey, Gwynedd and Wales. At its highest last year, **5.78%** of working age people were claiming the allowance which is more than double the Welsh figure at its highest. At its lowest 5.23% were claiming the benefit in Caergybi and Ynys Cybi in 2015. Anglesey' figure does not drop lower than **2.96%**, which is generally high compared to Gwynedd and Wales. Around **2.15%** of those aged 16-64 in Wales as a whole claim Jobseekers Allowance at any one time.



The rate of new business start-ups in Anglesey is higher than Gwynedd and very similar to the level in Wales. **65%** of companies on the island stay in business for at least three years. This is higher than the figure for Wales which has **60%**. The rate of business failing is also higher on Anglesey (8%) than Gwynedd (7%), and slightly lower than Wales (9%).

Retail is the area's largest sector – it accounts for 17% of employers. The hospitality and service sector is second largest at 15%. This is very different to the rest of Anglesey, where there are more employers in the agriculture sector.

Around **9.5%** of the working age population work from home in this part of the island – this is the lowest proportion on Anglesey. Just under **50%** of those living in Caergybi and Ynys Cybi travel less than six miles to work.

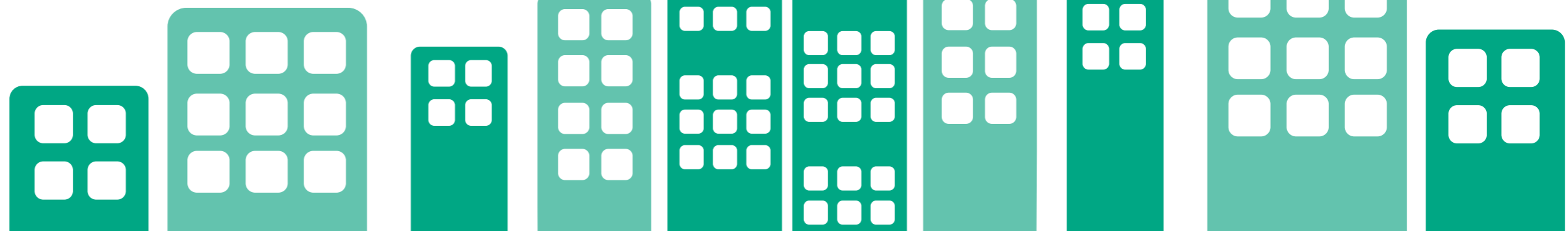
The median weekly wage in Anglesey is around **£422 per week**, which is **8% higher** than the median across Wales (£386 per week). Women's pay is **27% lower** than men's pay on the island, but this gap is lower than that for Wales which is 33%.

£422

IS THE MEDIAN WEEKLY WAGE IN THE AREA

65%

OF COMPANIES ARE IN BUSINESS FOR 3 YEARS+



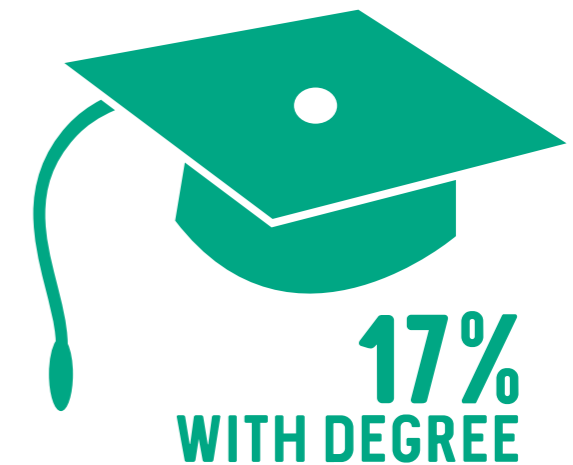
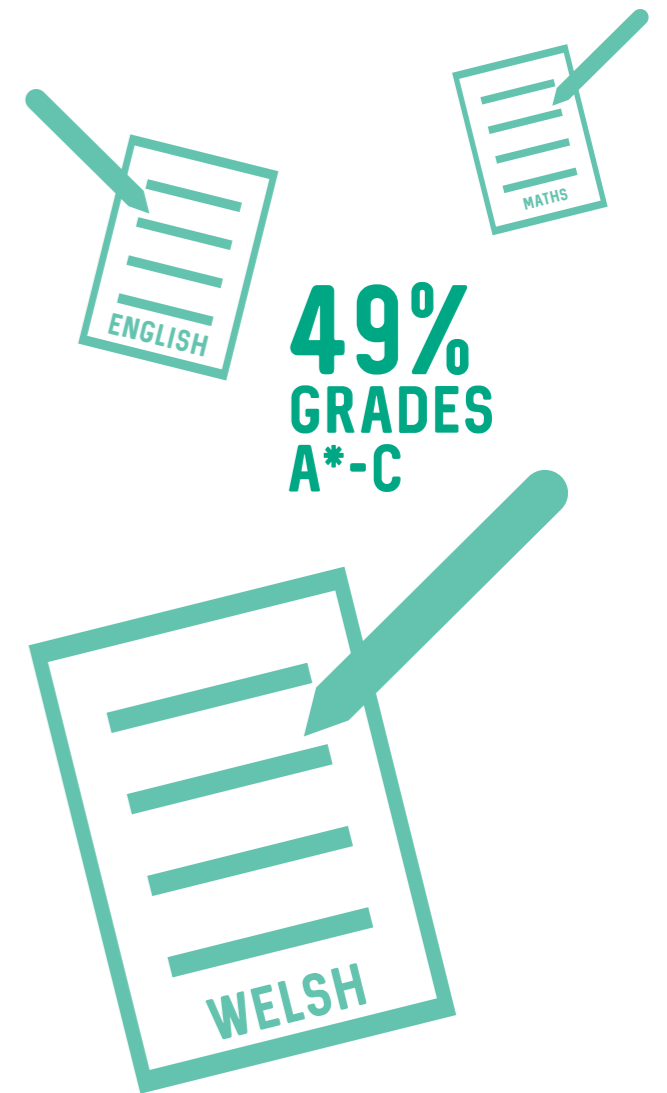
SKILLS FOR LIFE

49% of pupils from Caergybi and Ynys Cybi get 5 GCSEs **A*** to **C** in subjects including Welsh or English and Mathematics – this is the lowest figure on Anglesey, where the figure is at **57%**.

Of those who gain these grades, there is an attainment gap of **16%** between pupils who qualify for free school meals and those who do not – this compares with a figure of **25%** for Anglesey.

Around **2.2%** of the young people who leave school on Anglesey do not continue to higher or further education, go on to training or find work. This is lower than the Welsh figure of 2.8%.

Just over **17%** of Caergybi and Ynys Cybi's population have a degree or qualification – this is the lowest rate on Anglesey. Around **30%** are without any qualifications, and this is the highest across the island, Gwynedd, and Wales.



THE MONEY IN YOUR POCKET

The money available to spend after taxes and the costs of paying for a home by the people of Anglesey, is **£16,238** per person annually, which is £936 higher than the whole of Wales.

In Caergybi and Ynys Cybi, **27%** of primary school pupils claim free school meals. This is 9% higher than the figure for the whole of Anglesey. By the time pupils get to secondary school in Caergybi and Ynys Cybi the figure drops to **24%**.

Nearly **23%** of households in Caergybi and Ynys Cybi are in fuel poverty, this is the highest on Anglesey where the average is **18%**. Of all the homes in the area, around **5%** are without central heating, which is similar to the rest of Anglesey but higher than Wales which has **2%**.

In Caergybi and Ynys Cybi, a large proportion of homes are rented (41%). This is also where the highest percentage of terraced houses are on Anglesey (37%).

The median property price for Caergybi and Ynys Cybi is **£110,000**, this is the lowest on Anglesey. The median household income in Caergybi and Ynys Cybi is **£19,996**, but £22,321 is needed to afford a house at the market entry level. This means **54%** of families in Caergybi and Ynys Cybi are priced out of the market. This is lower than other areas of Anglesey at 64%, and Wales which is at 59%.

54%

LOCAL PEOPLE PRICED OUT OF THE MARKET

MEDIAN HOUSE PRICE
£110K

MEDIAN INCOME
£20K

CULTURAL



KEEPING FIT

46% of pupils on Anglesey visit a leisure centre – which is higher than Wales' level of 42%, but lower than Gwynedd which is 53%. Around 50% of the island's children also take part in sports activities 3 or more times a week – this compares to 48% in Wales.

37% of adults on Anglesey say they are active for at least 30 minutes on five or more occasions a week – this is higher than the Wales figure of 31%, but very similar to Gwynedd. This percentage has increased gradually over recent years.



37%
OF ADULTS KEEP
ACTIVE FOR AT
LEAST 30 MINUTES
5 TIMES A WEEK



SPARE TIME

60% of adults on Anglesey have attended an arts event during the year, with 34% having visited a museum and 57% visiting a historical site. This is similar to Gwynedd and the rest of Wales.

57%
VISITED A
HISTORIC
SITE



FOR MORE
INFORMATION...

WWW.GWYNEDDANDMONWELL-BEING.ORG
01766 771000

Ask for the
Gwynedd and Môn Partnership Manager