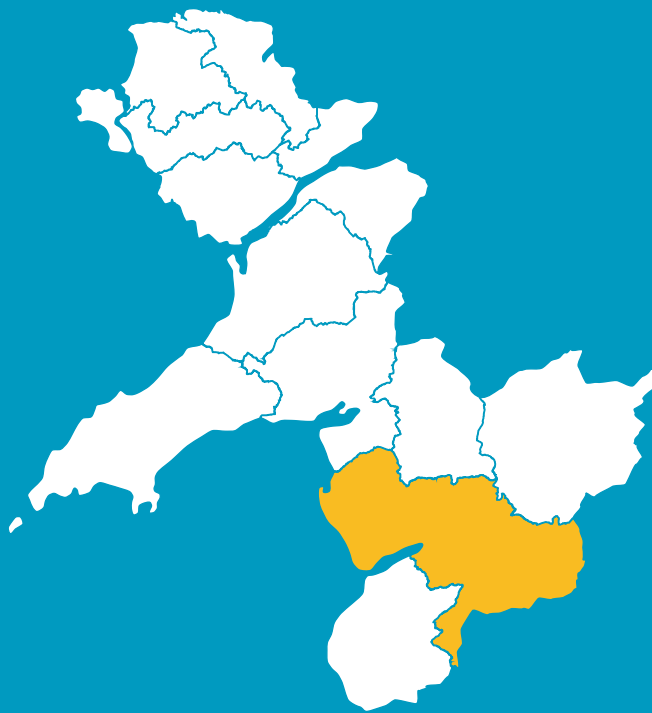


IT'S YOUR AREA. WHAT'S IMPORTANT?

DOLGELLAU AREA



WELL-BEING ASSESSMENT GWYNEDD AND MÔN

WANT
TO HAVE
YOUR
SAY?

The new act has established Public Services Boards for each local authority area to make sure that public bodies work together to create a better future for the people of Wales.

For Gwynedd and Môn, both Boards have decided to work together, and it's a partnership which includes the local authorities, the fire and rescue service, the health service and Natural Resources Wales.

The Gwynedd and Môn Public Services Board has divided the whole area into 14 smaller areas. Research has been carried out on behalf of the Board on each of the 14 areas to learn and understand more about the well-being of those areas. As well as the data available, we also want to know what you think about your area and community – what's important to you, what's good and what needs improving. **You will have an opportunity to have your say by attending one of the local drop-in sessions or in an online questionnaire. More information and the dates of all local sessions are on www.GwyneddandMonWell-being.org.**

This consultation period ends on December 31st 2016. The hope is that the Board will then have a clearer picture of our communities, what's important to the people in this part of Wales, and how partners can work together to plan services for the future.

THE WELL-BEING OF
FUTURE GENERATIONS
[WALES] ACT CAME INTO
FORCE ON 1ST APRIL
2016. THE PURPOSE OF
THE ACT IS TO IMPROVE
THE **SOCIAL,
ECONOMIC,
ENVIRONMENTAL
AND CULTURAL**
WELL-BEING OF WALES.

THIS IS THE
INFORMATION WE
HAVE COLLECTED ON
THE DOLGELLAU AREA,
WHICH INCLUDES
BARMOUTH, DYFFRYN
ARDUDWY AND DINAS
MAWDDWY. DO YOU
RECOGNISE THIS
PICTURE OF YOUR
AREA?



WHO ARE THE PEOPLE OF DOLGELLAU?

60% INCREASE AGE 80+

10,474 people live in the Dolgellau area. This is around 9% of the population of Gwynedd. On the whole the population of this area is older, this is especially true of the 60-75 age group, with a lower proportion in all age groups under 45.

The population of the Dolgellau area (including nearby Tywyn) has grown, with an increase of around 18% between 1981 and 2011. This is more than the growth seen in Gwynedd (15%) and Wales (11%) over the same period.

This increase is not the same for all age groups with the number of people aged over 80 in the Dolgellau area having more than doubled in 30 years. There has been a decrease of 13% in the number of children and younger adults, during the same period.

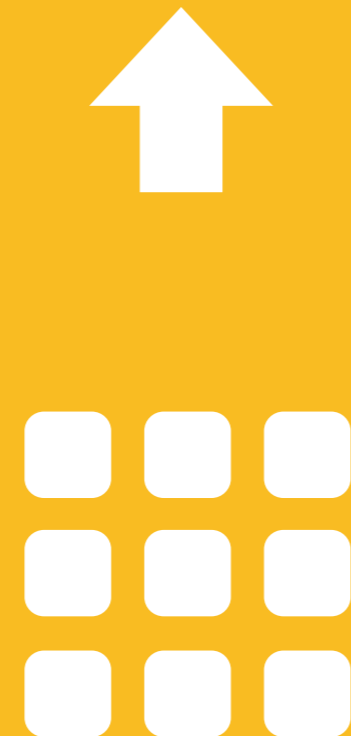
This growth is expected to continue in some age groups more than others, as people live longer and move into the area. In twenty years time it is anticipated that there will be 60% more people aged over 80 living in Gwynedd, but the growth of those aged between 16-64 will only be 2%.

LANGUAGE

According to the 2011 Census 48% of people in the Dolgellau area and nearby Tywyn can speak Welsh. This area has the lowest percentage of Welsh speakers in the whole of Gwynedd. The percentage has fallen by 11% over the past thirty years.

According to a recent survey, 30% of pupils in the Dolgellau area aged 7-11 speak Welsh on the school yard. This is substantially lower than the 69% figure across Gwynedd.

2036
POPULATION OF
GWYNEDD
132,000



2016
POPULATION OF
GWYNEDD
123,000



HOW GREEN IS THE AREA?

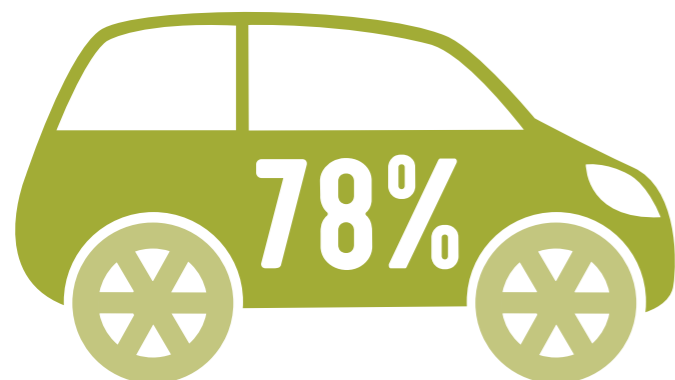
Recycling rates have risen in Gwynedd over the last 4 years. By now **59%** of all the waste collected from homes, businesses and recycling centres is reused or recycled. This includes bio-waste materials that are composted.

Recycling statistics for the Dolgellau area are counted as part of those for Meirionnydd— where **58%** of waste is recycled. This figure has improved substantially since 2014/15 when 49% was recycled.

Fly tipping is less common in Gwynedd than the rest of Wales – with only 4.3 cases per 1000 head of population compared to 10.2.

Carbon footprint – data shows that **78%** of households in this area own at least one car or van – which is 1% less than for Gwynedd as a whole and 1% more than Wales. Carbon emissions per head of population for Gwynedd as a whole are **7.0kt CO₂** which is also slightly higher than for Wales in general **6.6kt CO₂**.

Climate change is causing a rise in sea levels which contributes to the risk of flooding. Information for the Dolgellau area indicates a high risk of flooding could affect around 250 homes around Barmouth. Approximately **650 homes** face a threat of inland flooding from rivers in the area.

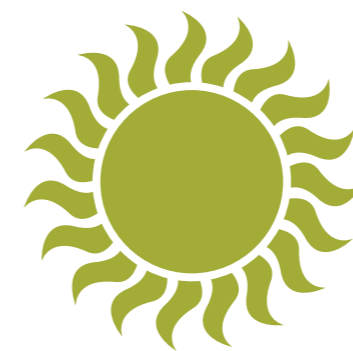


CLEAN STREETS?

The cleanliness of our streets is surveyed annually by Keep Wales Tidy. Their findings show that not one street in the Dolgellau area achieved an A grade – a street with no rubbish on it at all. **20%** of the streets had no more than three small items of rubbish on them (**Grade B+**) and **80%** were on the whole free of rubbish and waste, apart from some small items (**Grade B**).



**GRADE B
STREETS
80%**



THE NATURAL ENVIRONMENT

Dolgellau has a varied natural environment - with estuaries, woods and dunes.

The sand dunes at **Morfa Dyffryn** form a special area of conservation which not only includes the dunes themselves but also the beach, saltmarsh and grasslands which are home to a variety of wildlife.

The ecology of **Coed y Brenin** forest is of special interest, mainly due to the minerals including copper, gold and iron ore found there. The area's birds include the Dipper, Grey Wagtail and Heron around the rivers; the Crossbill, Jay, Woodpecker, Gold-crest and Goshawk in the forest.

Coed Aber Artro is part of the Eryri Centre of Excellence. The woodland is of European importance and as such forms part of the Meirionnydd Oakwoods and Bat Sites Special Area of Conservation (SAC). The high rainfall and mild climate encourages the growth of ferns, lichens, mosses and liverworts. Data shows that this is the only site in Wales where the scarce Sparkling Signal-moss "*Sematophyllum Micans*" grows.

Also in the Dolgellau area is **Dinas Oleu** which was the first tract of land to be donated to the National Trust in 1895.

The beach at **Barmouth** has been awarded the **Blue Flag** which means it is among the best beaches in the world. The beaches at **Bennar** and **Llandanwg** have been awarded the Green Coast Award.

SOCIAL

GOOD HEALTH?

In the Dolgellau area around **1,550** patients are registered per GP. This is higher than for Gwynedd as a whole at **1,400** and slightly lower than the **1,600** Wales figure.

The nearest large hospital is at Aberystwyth. If you live in the Dolgellau area, you can expect to wait between **3:12 minutes** and **6:52 minutes** for an ambulance to respond to a call where there is threat to life.

There is no specific information on the health of the population in the Dolgellau area. The statistics included in this booklet are for Gwynedd as a whole – but give an idea of the county's state of health and health patterns.

A man's life expectancy at birth in Gwynedd is **80** years whilst a woman's life expectancy is **83.5** years.

The gap between male and female life expectancy at birth between those who are most and least privileged in our communities, is substantially less in Gwynedd than for the rest of Wales as a whole. For women in Gwynedd the gap is **1.4** years compared with 7.3 years for Wales as a whole, and **3.1** years for men compared with an all-Wales figure of 8.9 years

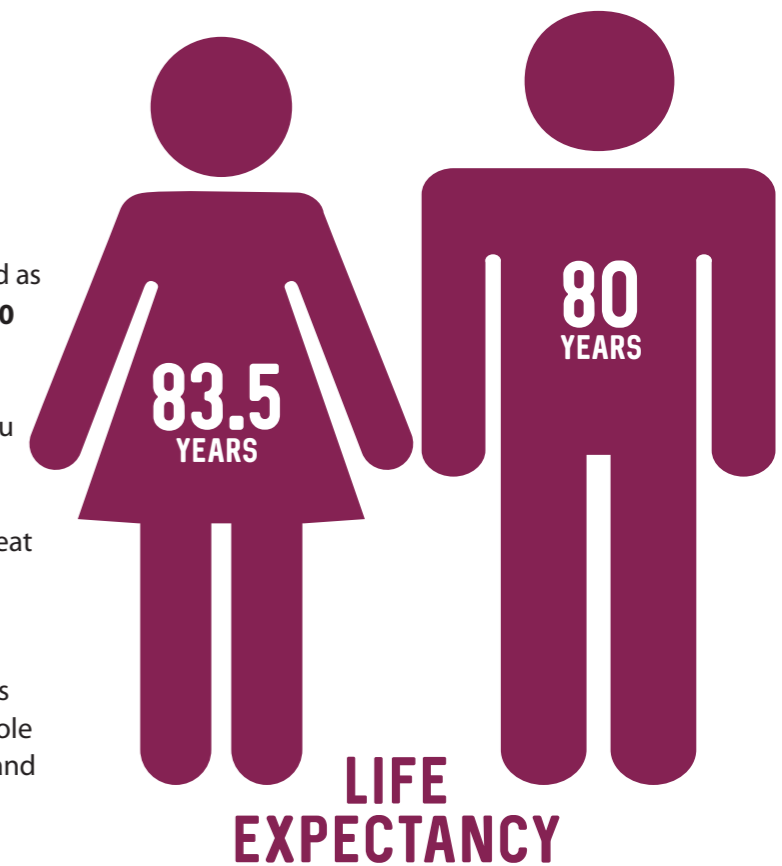
52% of all adults in Gwynedd are overweight or obese – which is lower than the all-Wales figure of 58%.

Around 30% of children aged 4-5 are overweight or obese in Gwynedd - this is higher than the Wales figure of 26%

Other factors that affect our health are smoking and drinking alcohol. **22%** of those aged 16 or older say that they smoke and 42% drink more than **5** small glasses of wine, or around 3 pints of lager, during the week's heaviest drinking day. These two figures are very similar to the all-Wales figures.

The suicide rate in Gwynedd is 14.7 per 100,000 of the population per annum which is higher than the rate for Wales as a whole which is at 12.2.

In Gwynedd the teenage pregnancy rate for those aged under 18 is 24 per 1000 females aged 15-17. This is similar to the Wales figure.



STAYING SAFE



The crime rate in the Dolgellau area per 1,000 head of population has increased slightly from **71.9** to **74.9** between 2011 and 2015. This is contrary to the pattern for Gwynedd as a whole where the crime rate has come down every year.

Anti-social behaviour is down but still accounted for **42%** of all crimes committed in the Dolgellau area during 2015.

81% of people believe that it is safe for children to play outside in Gwynedd and Môn. The corresponding all-Wales figure is **64%**.

In the Dolgellau area there are on average **34** incidents of fire every year. Around **9%** of these are started deliberately – the lowest level in Gwynedd.

34
FIRES

9%
DELIBERATE

KEEPING IN TOUCH

The percentage with access to broadband increases year upon year – now only **3%** of properties in Gwynedd do not have broadband access. This is a substantial improvement from **20%** in 2011.

Around **22%** homes in the Dolgellau area have no car or van. This compares with **21%** for Gwynedd as a whole.

According to national data, Corris, Mawddwy, Brithdir, Llanfachreth, Ganllwyd, Llanelltyd, Llanbedr and Dyffryn Ardudwy are among the 10% of areas in Wales where residents have to travel furthest to reach basic services such as a pharmacy, doctor's surgery and grocery shops.

Loneliness is a condition which can affect all ages but older people are more vulnerable to isolation. In the Dolgellau area, taking various factors which contribute to loneliness into account, those aged over 65 living in the Barmouth area have a higher risk of being lonely. In Wales, Gwynedd is among the counties facing the highest risk of loneliness.

HELPING EACH OTHER

12% of the population in the Dolgellau area provide unpaid care for at least one hour per week. This figure is very similar to other areas across Gwynedd and Môn.

283 people in Gwynedd volunteer through the **Volunteer Centre**. The real number of those who volunteer with sports clubs and various societies is much higher but is very difficult to measure.



JOBS AND THE ECONOMY

Using the measure of how strong and productive the economy is (Gross Value Added), Gwynedd's economy is stronger than that of Wales and neighbouring areas such as Anglesey, Conwy and Denbighshire. However, the economies of all these areas, including the whole of Wales, are weak in comparison to the UK economy.

30% of the working age population in the Dolgellau area with no qualifications, work in the elementary occupations e.g. cleaning and factory work, waste collection, farm work. In general, more people with no qualifications at all work in the elementary occupations than in any other occupations across Gwynedd.

Of the people in Dolgellau who have no qualifications at all, **46%** are economically inactive – this means that they don't work at all for various reasons. This figure is slightly higher than the figure for Gwynedd as a whole.

The skilled trades employ the highest percentage (**22%**) of the area's population. **37%** of those with a degree or equivalent work in professional occupations. This is similar to the Gwynedd and All-Wales picture.

At its highest last year, there were **2.31%** people aged 16-64 claiming Jobseekers Allowance in the Dolgellau area, and **1.2%** at its lowest. The percentage claiming the allowance in the area increases during winter, and is higher than the Gwynedd average for this period. The figure for Gwynedd as a whole does not drop below **1.78%** at any one time, and at least **2.15%** of those aged 16-64 in Wales as a whole claim the allowance.

£293

IS THE MEAN WEEKLY WAGE FOR THE AREA. THIS IS THE LOWEST IN BRITAIN



The rate of new start-up businesses in Gwynedd is lower than for Ynys Môn and Wales as a whole. **62%** of companies in Gwynedd stay in business for three years or more. This is slightly higher than for Wales as a whole at **60%**. The rate of business failures is also lower in Gwynedd compared with Wales as a whole.

The agricultural sector is the largest employer in the Dolgellau area – at **17%**. The next largest sector at **15%** is hospitality and food services, with retail at **12%**.

Of the population aged 16 or older in work, **23%** work from home which is among the highest in Gwynedd. This is also high compared with Wales as a whole at **11%**. Around **36%** of the population aged 16 or over who work in the Dolgellau area travel less than six miles to their place of work.

The median weekly wage in the Dwyfor Meirionnydd constituency (of which Dolgellau is a part) is around £293 a week, which is **16%** lower than Gwynedd as a whole (£347 a week) and **24%** lower than Wales (£387 a week). This is also the lowest in Britain.

Women's pay is **25% less** than men's pay in the constituency. This gap is narrower than the gap across Gwynedd where women are paid **32% less** than men.

SKILLS FOR LIFE

57% of pupils in the Dolgellau area achieve 5 **A*** to **C** grades in their GCSE examinations in subjects including Welsh or English and Mathematics. This is lower than the performance across Gwynedd (**63%**) and slightly higher than across Wales (**58%**).

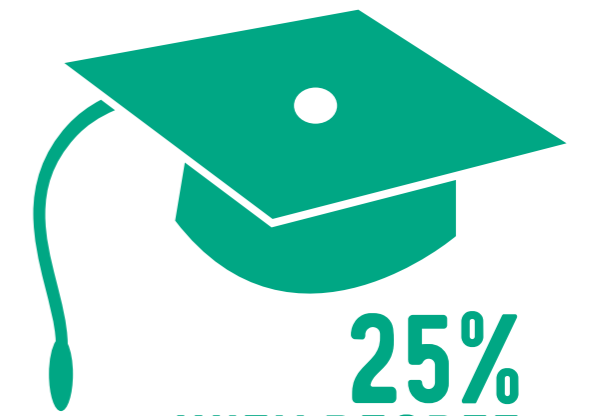
Of those achieving these 5 **A*** to **C** grades there is an attainment gap of **34%** between pupils who qualify for free school meals and those who do not. This compares with a gap of **36%** for Gwynedd and **33%** for Wales as a whole.

Of the young people who leave school, **1.8%** neither continue with their education, take up training or find work. This is lower than the all-Wales figure of **2.8%**.

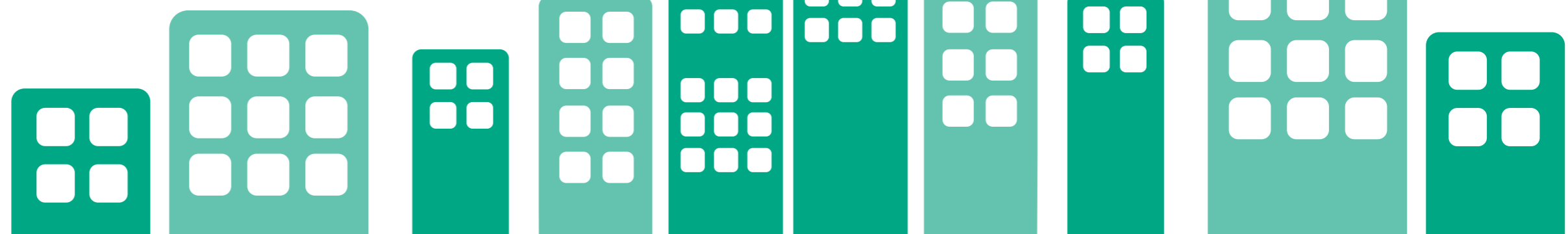
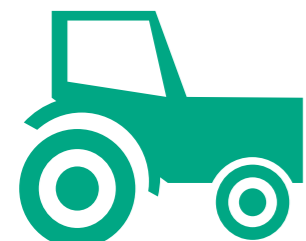
25% of people in the Dolgellau area have a degree or equivalent qualification. This is similar to the pattern across Gwynedd and Anglesey.



57% GRADES A*-C



25% WITH DEGREE



THE MONEY IN YOUR POCKET

The money available to spend by the people of Gwynedd, after paying taxes and household bills, is **£14,640** per head per annum which is £662 less than for Wales as a whole.

In the Dolgellau area, 11% of primary school children claim free school meals which is the second lowest in Gwynedd. By the time pupils reach secondary school, this figure decreases to 10%. This is lower than across Gwynedd (14% primary; 13% secondary).

21% of homes in the Dolgellau area are in fuel poverty, which is among the highest in Gwynedd. This is also substantially higher than the all-Wales figure of 14%. Of all the homes in the area, **9%** have no central heating which is one of the highest in Gwynedd, and also much higher than the Wales figure of **2%**.

The median property price in the Dolgellau area is **£145,000** which is close to the median property price in Gwynedd of £144,000. In this area, the median household income is **£21,000** but £31,000 is needed to afford a property at market entry level. This means that **68%** of families in the Dolgellau area are priced out of the market – compared with **60%** for Gwynedd and 59% for Wales as a whole.

68%

LOCAL PEOPLE PRICED OUT OF THE MARKET

MEDIAN HOUSE PRICE
£145K

MEDIAN INCOME
£21K

CULTURAL



KEEPING FIT

Figures for participation in sports are only available for Gwynedd as a whole. We know that **53%** of Gwynedd pupils visit leisure centres, which is higher than the all-Wales figure of **42%**. 51.6% of children in Gwynedd also take part in sports activities three or more times a week – which compares to 48% for Wales as a whole.

37% of adults say that they are active for **at least 30 minutes** on five or more occasions per week - which is higher than the Welsh figure of **31%**. The percentage has increased gradually over the past few years.



30%
OF CHILDREN'S
BOOKS BORROWED
ARE WELSH

37%
OF ADULTS KEEP
ACTIVE FOR AT
LEAST 30 MINUTES
5 TIMES A WEEK

SPARE TIME

On average people in the Dolgellau area borrow **6.1 books** per head of population – the **highest of all areas** in Gwynedd. Of the children's books borrowed, **30%** are Welsh books, which is lower than the figure of 39% for Gwynedd as a whole.

62% of adults in Gwynedd say that they attended an arts event during the year and **35%** visited a museum. Over half the county's people visited historical places which is similar to the Anglesey and all-Wales figures.

FOR MORE
INFORMATION...

WWW.GWYNEDDANDMONWELL-BEING.ORG
01766 771000

Ask for the
Gwynedd and Môn Partnership Manager

