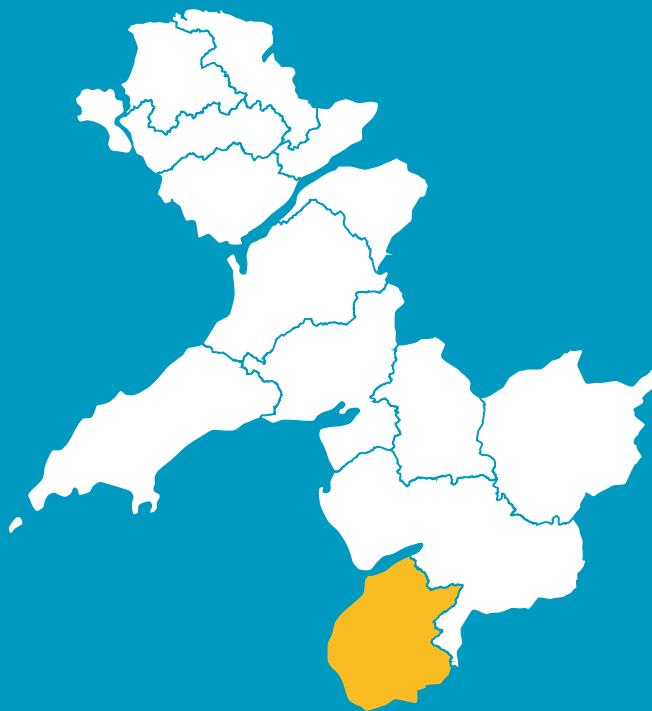


# IT'S YOUR AREA. WHAT'S IMPORTANT?

**TYWYN**  
AREA



# WELL-BEING ASSESSMENT GWYNEDD AND MÔN

WANT  
TO HAVE  
YOUR  
SAY?

The new act has established Public Services Boards for each local authority area to make sure that public bodies work together to create a better future for the people of Wales.

For Gwynedd and Môn, both Boards have decided to work together, and it's a partnership which includes the local authorities, the fire and rescue service, the health service and Natural Resources Wales.

The Gwynedd and Môn Public Services Board has divided the whole area into 14 smaller areas. Research has been carried out on behalf of the Board on each of the 14 areas to learn and understand more about the well-being of those areas. As well as the data available, we also want to know what you think about your area and community – what's important to you, what's good and what needs improving. **You will have an opportunity to have your say by attending one of the local drop-in sessions or in an online questionnaire. More information and the dates of all local sessions are on [www.GwyneddandMonWell-being.org](http://www.GwyneddandMonWell-being.org).**

This consultation period ends on December 31st 2016. The hope is that the Board will then have a clearer picture of our communities, what's important to the people in this part of Wales, and how partners can work together to plan services for the future.

THE WELL-BEING OF  
FUTURE GENERATIONS  
[WALES] ACT CAME INTO  
FORCE ON 1ST APRIL  
2016. THE PURPOSE OF  
THE ACT IS TO IMPROVE  
THE **SOCIAL,  
ECONOMIC,  
ENVIRONMENTAL  
AND CULTURAL**  
WELL-BEING OF WALES.

THIS IS THE  
INFORMATION WE HAVE  
COLLECTED ON THE  
TYWYN AREA, WHICH  
INCLUDES ABERDYFI,  
LLANGELYNIN AND  
FAIRBOURNE. DO  
YOU RECOGNISE THIS  
PICTURE OF YOUR  
AREA?



# WHO ARE THE PEOPLE OF TYWYN?

7,416 people live in Tywyn and the surrounding area which is around 6% of the population of Gwynedd.

The population of Tywyn is significantly older than that of Gwynedd and Wales as a whole. There is a much lower proportion of children and under 45s who live here – but a much higher proportion of those aged over 55 especially those aged between 65-85.

Over past decades the number of people living in Tywyn (together with the nearby area of Dolgellau) has increased (18% between 1981 and 2011). This is higher than the growth seen across Gwynedd (15%) and Wales (11%) over the same period.

This increase is not the same for all age groups – the numbers of those aged over 80 in the Dolgellau and Tywyn areas have more than doubled in 30 years, and there has also been a substantial increase in the population aged between 40-80. However the number of children and younger adults has decreased by 13% over the same period.

This growth is expected to continue in some age groups more than others, as people live longer and move into the area. In twenty years it is anticipated that there will be 60% more people aged over 80 living in Gwynedd, but there will only be a 2% growth in those aged between 16-64.

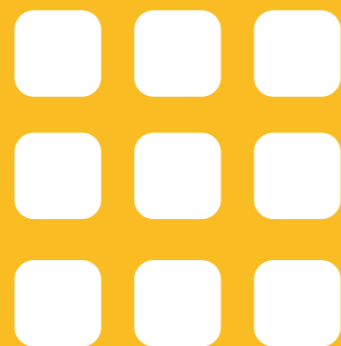
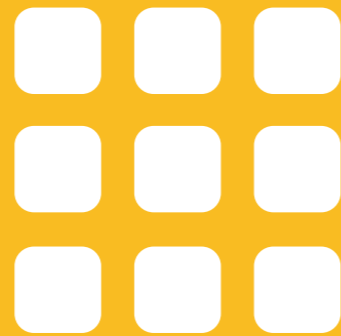
60% INCREASE AGE 80+

# LANGUAGE

According to the 2011 Census 48% of people in the Tywyn and Dolgellau areas can speak Welsh. This area has the **lowest percentage of Welsh speakers across the whole county**. Numbers have fallen by 11% over the past thirty years. This is very similar to percentage decrease seen in Gwynedd as a whole over the same period.

According to a recent survey, 26% of pupils aged 7-11 in the Tywyn area speak Welsh on the school yard often or all the time. This is significantly lower than the figure of 69% for Gwynedd and by far the lowest of all areas in Gwynedd.

2036 POPULATION OF GWYNEDD 132,000



2016 POPULATION OF GWYNEDD 123,000



## HOW GREEN IS THE AREA?

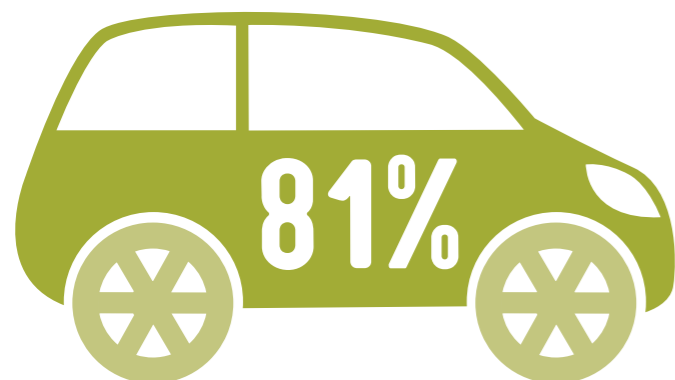
Recycling rates have risen in Gwynedd over the last 4 years. By now **59%** of all the waste collected from homes, businesses and recycling centres is reused or recycled. This includes bio-waste materials that are composted.

Recycling statistics for the Tywyn area are counted as part of those for the Meirionnydd region – where **58%** of waste is recycled. This figure has improved substantially since 2014/15 when 49% was recycled.

Fly tipping is less common in Gwynedd than the rest of Wales – with only **4.3 cases** per 1000 head of population compared to 10.2.

Carbon footprint – available data shows that **81%** of households in the area own at least one car or van compared with 79% for Gwynedd and 77% for Wales as a whole. Carbon emissions per head of population for Gwynedd as a whole are **7.0kt CO<sub>2</sub>** which is slightly higher than for Wales in general **6.6kt CO<sub>2</sub>**.

Climate change is causing a rise in sea levels which contributes to the risk of flooding. Information indicates that there is a high risk of flooding mainly around Arthog with about 650 houses at risk. Approximately 560 properties face the threat of inland flooding from rivers in the area.



## CLEAN STREETS?

The cleanliness of our streets is surveyed annually by Keep Wales Tidy. Their findings indicate that **13%** of the streets in the Tywyn area have no rubbish or waste at all (Grade A), **62%** were found to have no more than three small items of rubbish (Grade B+) and **25%** were on the whole free of rubbish and waste, apart from some small items (Grade B).



**GRADE A STREETS**  
**13%**

## THE NATURAL ENVIRONMENT

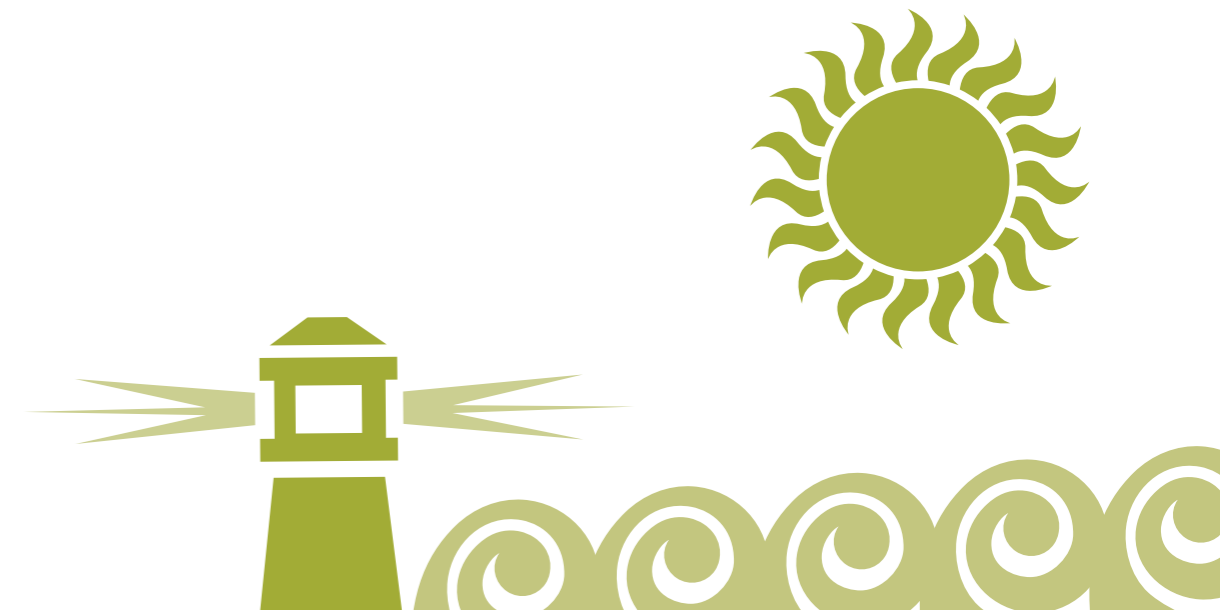
The Craig y Deryn (Bird Rock) Site of Special Scientific Interest is in the Tywyn area – the cliffs rise 250 metres above sea level. This is probably the only regular inland breeding and nesting site for the Cormorant in Wales. The rare Chough can also be seen here which makes this site of international importance.

The Mawddach estuary has the most extensive area of sheltered mudflats in Cardigan Bay – this is of significance due to the marine worms and bivalves to be found there which also attract a number of wild birds. The nearby Penmaenpool reed bed is one of the most extensive in Wales where Sedge Warblers and Grasshopper Warblers breed, with large flocks of Pied Wagtails roosting here over the winter.

Arthog Bog is also a site of interest as it provides a habitat for rare plant species. It is also home to the Redshank and Snipe.

The area surrounding the Dyfi river provides a varied environment and a number of important habitats including uplands, blanket bog, woodlands, farmland, salt-marshes, mudflats and sand dunes.

The beach at **Tywyn** has been awarded the Blue Flag which means it is among the best sites in the world. The beach at **Friog** has also been awarded the Green Coast Award.



# SOCIAL

## GOOD HEALTH?

In the Tywyn area around **1,400** patients are registered per GP. This is similar to the figure for Gwynedd but lower than the all-Wales figure of **1,600**.

If you live in Tywyn, you can expect to wait between **10:33 minutes** and **14:22 minutes** for an ambulance to respond to a call where there is threat to life.

There is no specific information on the health of people in the Tywyn area. The statistics included in this booklet are for Gwynedd as a whole – but they give an idea of the state of the county's health and the trends.

A man's life expectancy at birth in Gwynedd is **80** years whilst a woman can expect to live until she is **83.5** years old.

The gap between male and female life expectancy at birth between those who are most and least privileged in our communities, is substantially less in Gwynedd than for the rest of Wales as a whole. For women in Gwynedd the gap is **1.4** years compared with 7.3 years for Wales as a whole, and **3.1** years for men compared with an all-Wales figure of 8.9 years.

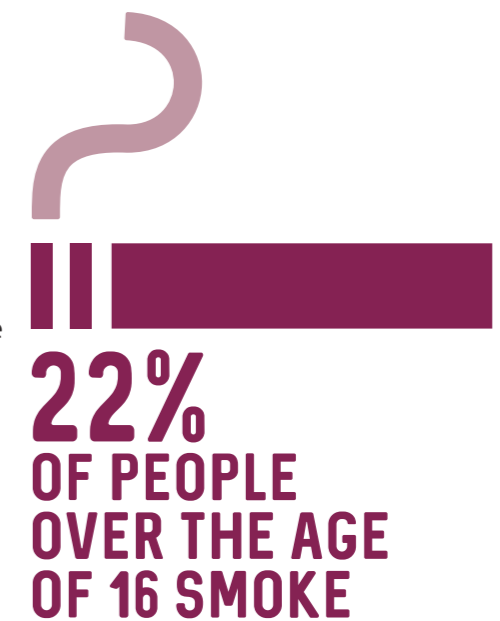
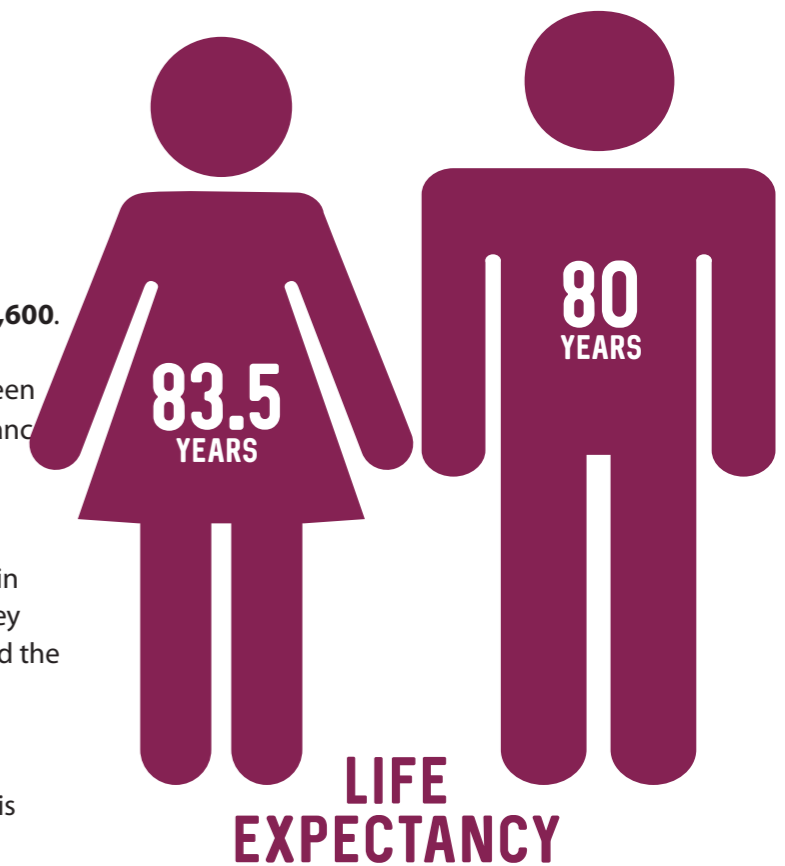
52% of all adults in Gwynedd are overweight or obese – which is lower than the all-Wales figure of 58%.

Around **30%** of children aged 4-5 are overweight or obese in Gwynedd - this is higher than the Wales figure of 26%

Other factors that affect our health are smoking and drinking alcohol. **22%** of those aged 16 or older report that they smoke and **42%** drink more than **5** small glasses of wine, or around 3 pints of lager, during the week's heaviest drinking day. These two figures are very similar to the all-Wales figures.

The suicide rate in Gwynedd is 14.7 per 100,000 of the population per annum which is higher than the rate for Wales as a whole which is at 12.2.

In Gwynedd the teenage pregnancy rate for those aged under 18 is 24 per 1000 females aged 15-17. This is similar to the Wales figure.





## STAYING SAFE



The crime rate in the Tywyn area for every 1,000 per head of population has fallen from **61.2** to **34.8** between 2011 and 2015. This follows the same trend across Gwynedd which has also seen the number of crimes fall from **119** to **92.1** over the same period.

Anti-social behaviour is down but still accounts for **33%** of all crimes committed in the Tywyn area.

**81%** of people believe that it is safe for children to play outside in Gwynedd and Anglesey. The corresponding all-Wales figure is **64%**.

In the Tywyn area there are, on average, **19** fire incidents every year. Around **11%** of these incidents involve fires started intentionally. The percentage of fires started deliberately within the different areas in Gwynedd varies between 9% and 33% on average.

**19**  
FIRES

**11%**  
DELIBERATE

## KEEPING IN TOUCH

The percentage with access to broadband increases year upon year – now only **3%** of properties in Gwynedd do not have broadband access. This is a substantial improvement from 20% in 2011.

Around **19%** homes in the Tywyn area have no car or van. This compares with 21% for Gwynedd as a whole.

According to national data, the Llangelynnin, Aberdyfi, Brynchrug and Llanfihangel areas are among the 10% of areas in Wales where residents travel furthest to access basic services such as pharmacies, food shops and GP surgeries.

Loneliness is a condition which can affect all ages but older people are more vulnerable to isolation. In the Tywyn area, taking various factors which contribute to loneliness into account, there is a higher risk of being lonely for those aged 65+ in the town of Tywyn itself. There is a lower risk in the Aberdyfi and Pennal areas. In Wales, Gwynedd is among the counties with the highest risk of loneliness.

## HELPING EACH OTHER

**13%** of the population in this area provide unpaid care for at least one hour per week. This figure is very similar to other areas across Gwynedd and Anglesey.

**283** people in Gwynedd volunteer through the **Volunteer Centre**. The real number of those who volunteer with sports clubs and various societies is much higher but is very difficult to measure.



# JOBS AND THE ECONOMY

Under the measure of how strong and productive the economy is (Gross Value Added), Gwynedd's economy is stronger than that of Wales and neighbouring areas such as Anglesey, Conwy and Denbighshire. However, the economies of all these areas, including the whole of Wales, are weak in comparison to the UK economy.

In the Tywyn area **29%** of the population in work, but with no qualifications, work in the elementary occupations e.g. cleaning, factory work, waste collection, farm work. In general, more people with no qualifications at all in Gwynedd work in these elementary occupations than in any other. Of those with no qualifications, Tywyn has the highest percentage of people working as managers and directors (15%).

Of working-age people in Tywyn with no qualifications, **44%** are economically inactive – this means that they don't work and are not looking for work for different reasons.

The skilled trades employ the most of all the people who are in work in this area – 23%. This is the same as the pattern across Gwynedd and Anglesey. Around **34%** people with a degree or equivalent qualification work in the professions. This trend is also similar to Gwynedd and Wales as a whole.

The percentage of people aged 16-64 who claim the Jobseekers Allowance in the Tywyn area is consistently lower than for Gwynedd as a whole. At its highest last year **1.91%** of those who are of working age claimed the allowance, and **1.27%** at its lowest. The figure for Gwynedd as a whole does not drop below **1.78%** and at least **2.15%** of those aged 16-64 in Wales as a whole claim the allowance.

# £293

## IS THE MEAN WEEKLY WAGE FOR THE AREA. THIS IS THE LOWEST IN BRITAIN



The rate of new start-up businesses in Gwynedd is lower than for Anglesey and Wales as a whole. 62% of companies in Gwynedd stay in business for three years or more. This is slightly higher than the Welsh figure of 60%. The rate of business failures is also lower in Gwynedd compared with the rest of Wales.

Agriculture and forestry is the largest sector in the Tywyn area – accounting for 25% of all employers. The second largest sector is hospitality and food services (17%) followed by retail (12%).

**23%** of the working population work from home which is higher than the figure for Gwynedd and Wales. **37%** of the population aged 16 or over who work in the Tywyn area travel less than six miles to work.

The median weekly wage in the Dwyfor Meirionnydd constituency (of which Tywyn is a part) is around £293 a week, this is 16% lower than Gwynedd as a whole (£347 a week) and 24% lower than Wales (£387 a week). This is the lowest across the UK.

Women's pay is **25% less** than men's pay in the constituency. This gap is narrower than the gap across Gwynedd where women are paid **32% less** than men.

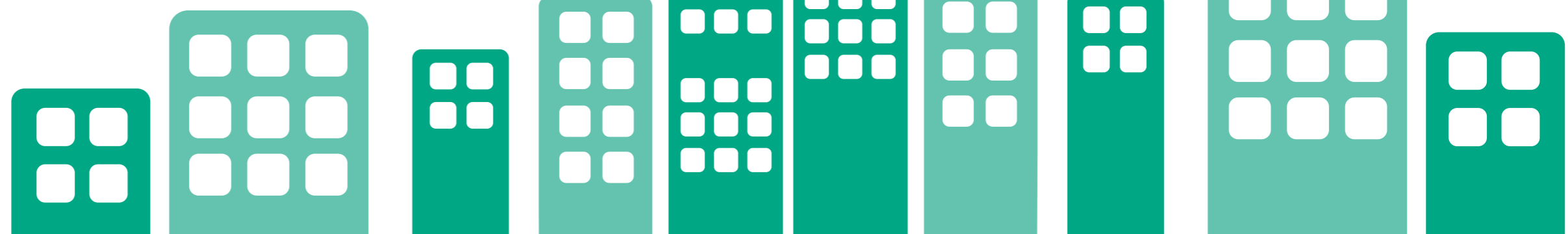
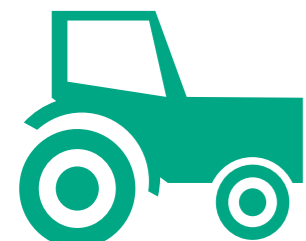
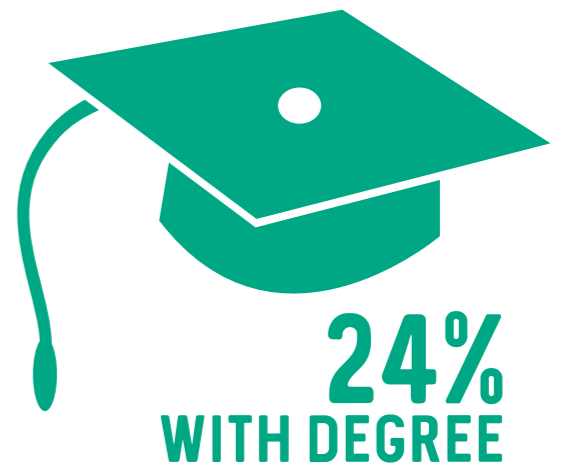
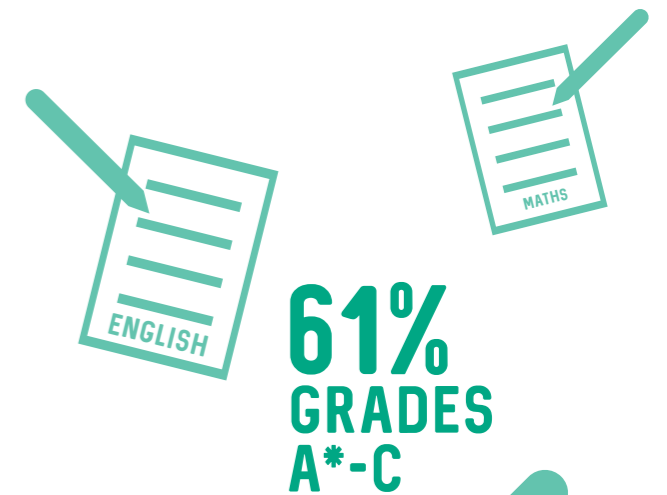
# SKILLS FOR LIFE

**61%** of pupils in the Tywyn area achieve at least 5 **A\*** to **C** grades in their GCSE examinations in subjects including Welsh or English and Mathematics. This is lower than the performance across Gwynedd of **63%** and Wales at **58%**.

Of those who achieve these grades, there is an attainment gap of **46%** between pupils who claim free school meals and those who do not. It compares with **36%** for Gwynedd and **33%** for Wales as a whole.

Of the young people who leave school – **1.8%** do not go on to education, employment or training in Gwynedd. This is lower than the all-Wales figure of **2.8%**.

**24%** of people in the Tywyn area have a degree or equivalent qualification which is similar to the county and all-Wales level. The trend of qualifications in the Tywyn area is very similar across every category to most areas across Gwynedd. 28% of the population have no qualification which is the highest in the county.



# THE MONEY IN YOUR POCKET

The money available to spend by the people of Gwynedd, after paying taxes and household bills is **£14,640** per head per annum which is £662 less than for Wales as a whole.

In the Tywyn area, **13.2%** of primary school pupils claim free school meals which is lower than the Gwynedd figure of **14.3%**. By the time pupils reach secondary school this figure usually falls, but for Tywyn the figure increases to **14.6%**.

**20%** of homes in Tywyn are in fuel poverty. This compares with 21% for Gwynedd and 14% for Wales as a whole.

Of all the households in the area, **8%** have no central heating with is the same as for the rest of Gwynedd but substantially higher than the **2%** across Wales.

The median property price in the Tywyn area is **£145,500** which is similar to the median property price in Gwynedd of £144,000. In this area the median household income is **£20,000**, but £29,000 is needed to afford a property at market entry level price. This means that **52%** of families in the Tywyn area are priced out of the market which is slightly lower than that across Gwynedd where **60%** are priced out of the market.

52%

LOCAL PEOPLE PRICED OUT OF THE MARKET

MEDIAN HOUSE PRICE  
**£145K**

MEDIAN INCOME  
**£20K**





# KEEPING FIT

Figures for participation in sport are only available for Gwynedd as a whole. We know that **53%** of Gwynedd pupils visit leisure centres, which is higher than the Wales figure of **42%**. 51.6% of children in Gwynedd also take part in sports activities three times a week or more – which compares to 48% for Wales as a whole.

**37%** of adults report that they are active for at least **30 minutes** on five or more occasions per week – this is higher than the rate of **31%** for Wales. The percentage has risen steadily over the last few years.



**17%**  
OF CHILDREN'S  
BOOKS BORROWED  
ARE WELSH

**37%**  
OF ADULTS KEEP  
ACTIVE FOR AT  
LEAST 30 MINUTES  
5 TIMES A WEEK

# SPARE TIME

On average **3.8 books** are borrowed per head of population in the Tywyn area. Of the children's books borrowed, **17%** are Welsh language books which is **substantially lower** than the figure of 39% for Gwynedd as a whole.

**62%** of adults in Gwynedd say that they attended an arts event during the year and 35% visited a museum. Over half the county's population visited historical places which is similar to the Anglesey and all-Wales figures.

FOR MORE  
INFORMATION...

[WWW.GWYNEDDANDMONWELL-BEING.ORG](http://WWW.GWYNEDDANDMONWELL-BEING.ORG)  
**01766 771000**

Ask for the  
Gwynedd and Môn Partnership Manager

