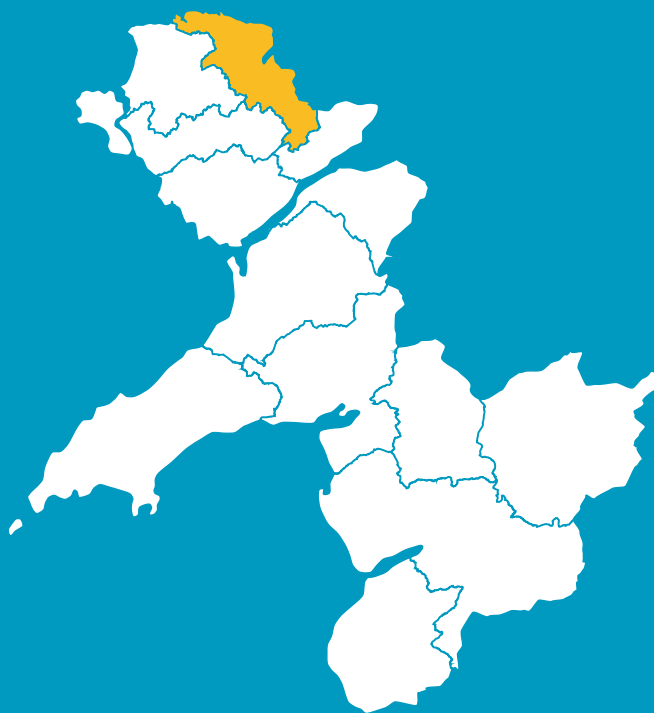


IT'S YOUR AREA. WHAT'S IMPORTANT?

LLIGWY AND TWRCELYN AREA



WELL-BEING ASSESSMENT GWYNEDD AND MÔN

WANT
TO HAVE
YOUR
SAY?

The new act has established Public Services Boards for each local authority area to make sure that public bodies work together to create a better future for the people of Wales.

For Gwynedd and Anglesey, both Boards have decided to work together, and it's a partnership which includes the local authorities, the fire and rescue service, the health service and Natural Resources Wales.

The Gwynedd and Môn Public Services Board has divided the whole area into 14 smaller areas. Research has been carried out on behalf of the Board on each of the 14 areas to learn and understand more about the well-being of those areas. As well as the data available, we also want to know what you think about your area and community – what's important to you, what's good and what needs improving. **You will have an opportunity to have your say by attending one of the local drop-in sessions or in an online questionnaire. More information and the dates of all local sessions are on www.GwyneddandMonWell-being.org.**

This consultation period ends on December 31st 2016. The hope is that the Board will then have a clearer picture of our communities, what's important to the people in this part of Wales, and how partners can work together to plan services for the future.

THE WELL-BEING OF
FUTURE GENERATIONS
[WALES] ACT CAME INTO
FORCE ON 1ST APRIL
2016. THE PURPOSE OF
THE ACT IS TO IMPROVE
THE **SOCIAL,**
ECONOMIC,
ENVIRONMENTAL
AND CULTURAL
WELL-BEING OF WALES.

THIS IS THE
INFORMATION WE HAVE
COLLECTED ON THE
LLIGWY AND TWRCELYN
AREA SO FAR. DO
YOU RECOGNISE THIS
PICTURE OF YOUR
AREA?



WHO ARE THE PEOPLE OF LLIGWY AND TWRCELYN?

80% INCREASE AGE 80+

13,670 people live in the Lligwy a Twrcelyn area. This is around 19% of Anglesey's population.

Compared to the rest of Anglesey and Wales, the population of Lligwy and Twrcelyn is much older, with a lower percentage of people under 45 years old and more people over 60, and especially between 60 and 80 years old.

The number of people living in the Lligwy and Twrcelyn area has **increased by 6%** between 1981 and 2011. This is similar to the growth in Anglesey over the same period but lower than that through the whole of Wales (11%).

This increase has not been the same in every age group. The number of people over 80 in the area has grown by 160% in 30 years. But there has been a drop of over 30% in the number of children under 15 years old and more than a 20% decline in the number of people aged between 16 and 39 in the same period.

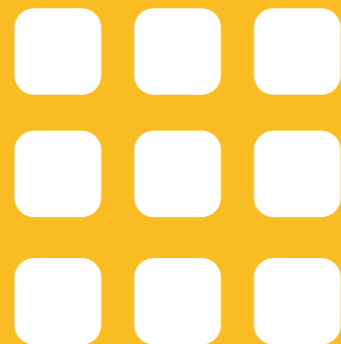
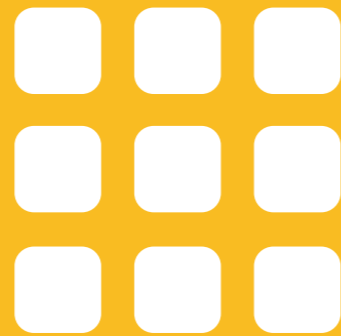
This pattern is expected to continue over the next 20 years with an increase of 80% in the number of people over 80 years old across Anglesey – but it's likely the population under 16 years old will fall by 12%.

LANGUAGE

According to the 2011 Census, 55% of people who live in Lligwy and Twrcelyn speak Welsh. This has fallen by 6% since 1981. This reflects the pattern across the rest of the county which has seen a decline of 5% in speakers from 62% to 57% over the same period.

Recent figures show that 46% speak Welsh every day on Anglesey, compared to 11% across Wales.

2016
POPULATION OF
ANGLESEY
70,000



2036
POPULATION OF
ANGLESEY
68,000



ENVIRONMENTAL

HOW GREEN IS THE AREA?

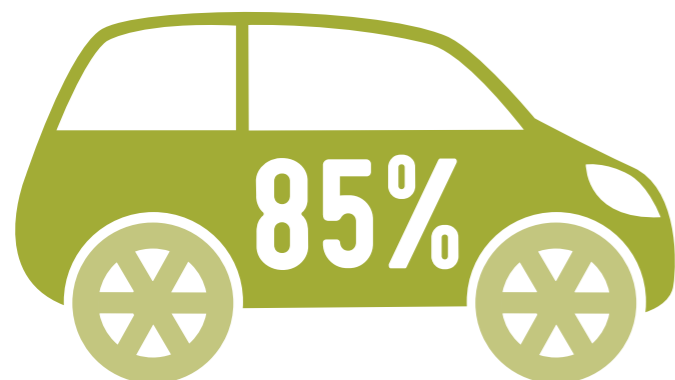
Recycling rates have risen in Anglesey over the last 4 years. By now **59.5%** of waste collected from houses, business and recycling centres in Anglesey is re-used or recycled. This includes bio waste materials which are composted.

The fly tipping rate is higher on Anglesey than the rest of Wales – with 25.3 cases per 1000 head of population reported, compared to 10.2.

Carbon footprint – information shows that **85%** of homes in Lligwy and Twrcelyn own at least **one** car, compared with 82% on Anglesey as a whole and **77%** in Wales. Carbon emissions per head of the population for Anglesey are **6.7kt CO₂** which is slightly higher than Wales level of **6.6kt CO₂**.

Climate change causes the sea level to rise which contributes to the risk of flood in the area. In Anglesey, around **970** properties are at risk of floods in 4 areas which have been identified as being in danger of severe flooding.

In Lligwy and Twrcelyn around **200** homes are at risk of inland flooding by rivers in the area.



CLEAN STREETS?

The cleanliness of our streets is inspected annually by Keep Wales Tidy. Of the streets inspected in this area **8%** were without any rubbish or waste (Grade A), **34%** had no more than three small items of rubbish (Grade B+) and **50%** generally had no rubbish or waste, except for some small items (Grade B). On the whole, across Anglesey the streets tend to be Grade B or B+.



GRADE A STREETS
8%

THE NATURAL ENVIRONMENT

There are many important habitats on Anglesey which include low and coastal heathland, marshes, woodlands, and ancient hedgerows, as well as some of the largest sand dunes in Wales. This is one of the strongholds for some rare species, such as the Great Crested Newt, the Red Squirrel, Otter, Water Vole and Chough. Protection plans are in place for each one of them.

Gors Goch National Nature Reserve in the area is part of Anglesey's wetlands. It is a calcareous (lime) fenland which is now rare in the UK, and a number of the species living here have adapted specifically for a habitat such as this.

The **red squirrel** is one of the rarest mammals in Wales – a project has been in place on Anglesey for years in order to increase numbers. Many can now be seen in **Mynydd Llwydiarth** forest close to Pentraeth.

The first mink was caught on Anglesey in 2005, several have been caught since at **Cors Erddreiniog** not far from Benllech. There are efforts to ensure it doesn't become established on the island as it hunts fish, invertebrates, amphibians, birds and small mammals, which make it a threat to wildlife in the area.

Benllech beach has been awarded the Blue Flag which means it is amongst the best beaches in the world.



SOCIAL

GOOD HEALTH?

In Lligwy and Twrcelyn around **1,400** patients are registered per GP. This is similar to the rest of Anglesey but is significantly lower than Wales which is at **1,600**.

Depending on where you live in this area then it's likely you will wait on average between **9:15 minutes** and **15:48 minutes** for an ambulance to respond to a call where there is threat to life.

There is no specific information available on the health of the population of Lligwy and Twrcelyn. The statistics included in this booklet are for the whole of Anglesey – but give an indication of the health conditions and trends in the county.

Men's life expectancy at birth on Anglesey is **78.7 years**, whilst a woman can expect to live until she is **83 years old**.

The gap between male and female life expectancy at birth, between those who are most and least privileged in our communities, is substantially less in Anglesey than for Wales as a whole. The gap is as much as 75% less for women and 30% for men.

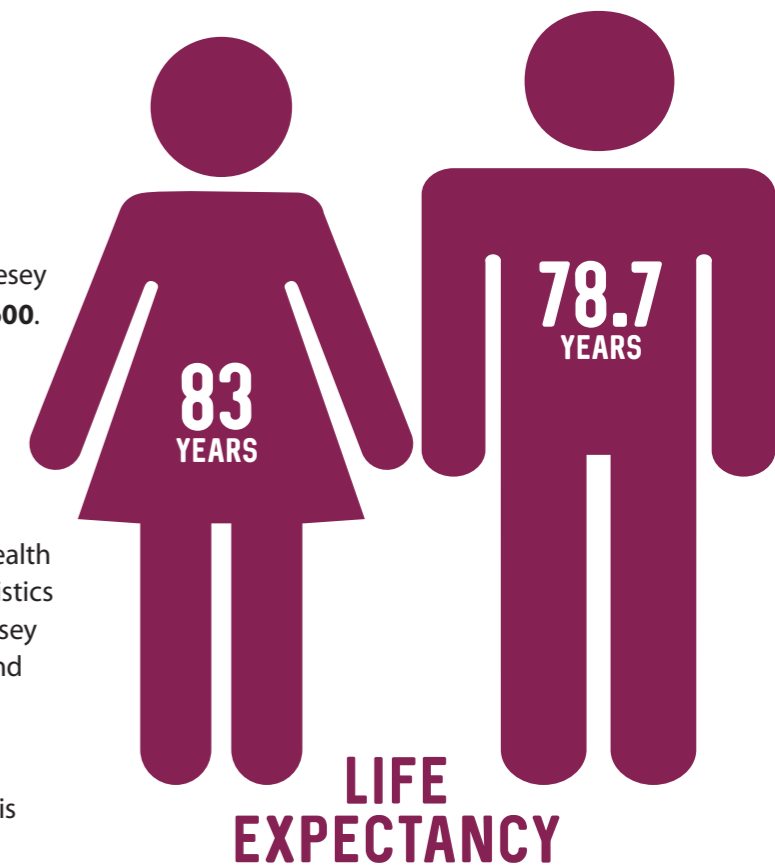
58% of adults on Anglesey are overweight or obese – this is the same as the population of the whole of Wales. The percentage on the island has increased by 3% since 2011, whilst Wales' figure has stayed the same.

On Anglesey, 32% of children aged 4-5 years are overweight or obese - this is higher than the Wales figure of 26%.

Other factors that affect our health are smoking and drinking alcohol. **22%** of people who are 16 or older on Anglesey say they smoke and **38%** of people drink more than **5** small glasses of wine, or around 3 pints of beer, on the heaviest drinking day of the week. This is similar to the rest of Wales and has been consistent over recent years.

The suicide rate on Anglesey of 10.4 for every 100,000 of the population, is lower than the Wales suicide rate which is 12.2 a year.

On Anglesey the teenage pregnancy rate for under 18s is 23.6 per 1000 females aged 15-17. This is similar to the Wales figure.



22% OF PEOPLE OVER THE AGE OF 16 SMOKE



STAYING SAFE



The crime rate for Lligwy and Twrcelyn per 1,000 head of the population has fallen from **78.6** to **57.7** between 2011 and 2015. This follows the general pattern for Anglesey.

Anti-social behaviour is also down in Lligwy and Twrcelyn, but still accounts for **34%** of all the area's crime.

81% of people believe it is safe for children to play outside in Anglesey and Gwynedd. The corresponding figure for Wales is **64%**.

In Lligwy and Twrcelyn there are **47** instances of fire on average every year – **19%** of these cases are started intentionally. The number of deliberate fires in Anglesey varies between **9%** and **42%**.

47
FIRES

19%
DELIBERATE

KEEPING IN TOUCH

The percentage with access to broadband is increasing annually – now, only **2%** of properties in Anglesey have no access at all.

15% of homes in Lligwy and Twrcelyn are without a car or van, which is lower than the figure for Wales which is 22%.

According to national data, Llanelian and Pentraeth are amongst the 10% of areas in Wales where it takes most time to travel to basic services such as a pharmacy, grocery shop and doctor's surgery.

Loneliness is a condition that affects all ages, but older people are more vulnerable. In Lligwy and Twrcelyn, considering the different factors that contribute to loneliness, there is higher risk for people over 65 in the Porth Amlwch area. The risk is lower in Llanbedrgoch.

HELPING EACH OTHER

13% of the population in Lligwy a Twrcelyn provide at least one hour a week of un-paid care. This figure is similar to other areas in Anglesey and the rest of Wales.



JOBS AND THE ECONOMY

Using the measure of how strong and productive the economy is (Gross Value Added) Anglesey's economy is generally weaker than that of Wales. But, the economy of the whole of Wales is weak compared to the United Kingdom.

Around **40%** of people in work, but without qualifications in the Lligwy and Twrcelyn area work in the skilled crafts.

Of those of working age in Lligwy and Twrcelyn with no qualifications, **52%** are economically inactive – this means that they don't work and are not looking for work for different reasons. This is the highest figure amongst all the areas on Anglesey.

About **24%** of people with a degree or equivalent work in the professional field, this is lower than the figure for Anglesey and the rest of Wales. A relatively high percentage, 20%, of those with a degree qualification or equivalent in this area work the skilled crafts. This area also has the highest percentage in Anglesey of people who have an apprentice qualification.

At its highest, **3.13%** of people between 16-64 in Lligwy and Twrcelyn were claiming the Jobseeker's Allowance last year. This percentage is higher than the Welsh figure – where there are at least **2.15%** of those aged 16-64 claiming Jobseekers Allowance at any one time.

The rate of new business start-ups in Anglesey is higher than Gwynedd and very similar to the level in Wales. **65%** of companies on the island stay in business for at least three years. This is higher than the figure for Wales which has **60%**. The rate of business failing is also higher on Anglesey (8%) than Gwynedd (7%), and slightly lower than Wales (9%).

Farming is the largest sector in Lligwy and Twrcelyn – it accounts for 30% of the area's employers. This is the highest percentage across the island. The figure is double that for the sector next to it, which is construction on 15%.

Around **17%** work from home in this area, this is the second highest on Anglesey – this is also higher than the Welsh figure of 11%. Nearly **46%** of the working population who live in Lligwy and Twrcelyn travel more than six miles to work. People in this area travel the furthest to work.

The median weekly wage in Anglesey is around **£422 per week**, which is **8% higher** than the median across Wales (£386 per week). Women's pay is **27% lower** than men's pay on the island, but this gap is lower than that for Wales which is 33%.

£422

IS THE MEDIAN WEEKLY WAGE IN THE AREA

65%

OF COMPANIES ARE IN BUSINESS FOR 3 YEARS+

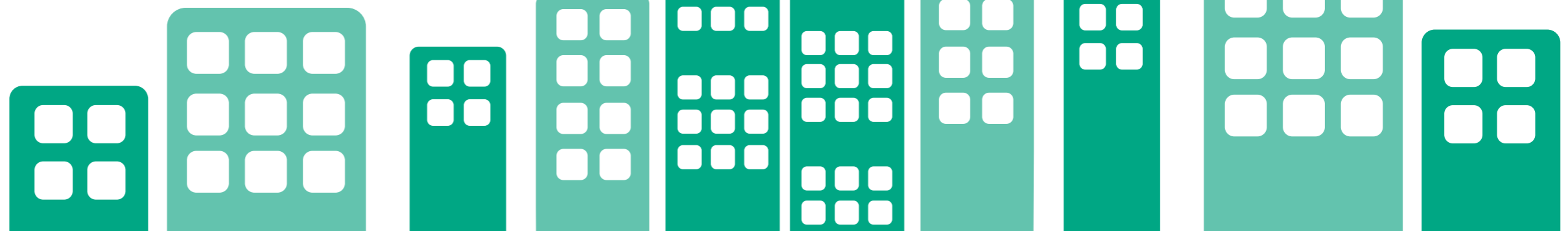
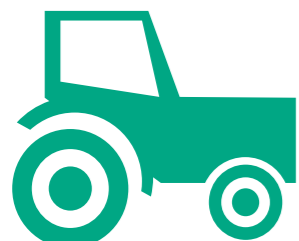
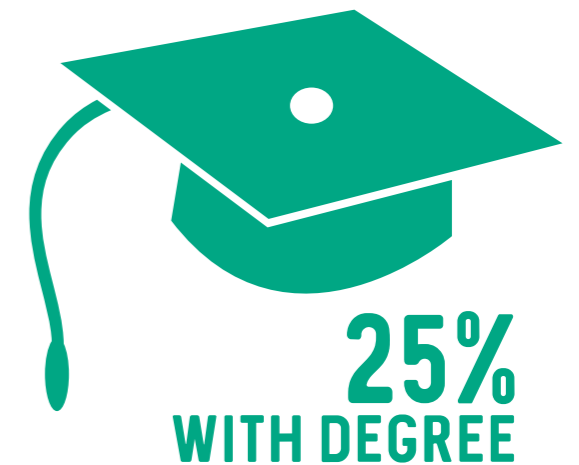
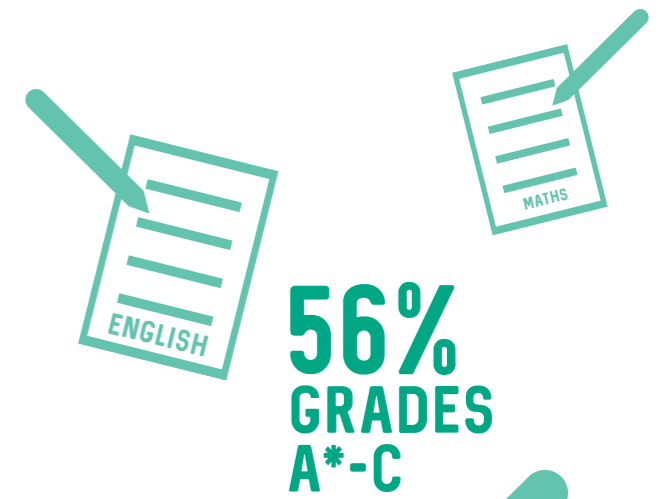
SKILLS FOR LIFE

56% of pupils from Lligwy and Twrcelyn area get 5 GCSEs **A* to C** in subjects including Welsh or English and Mathematics – this is lower than the figure for Anglesey (57%) and Wales (58%). This is the second lowest figure of all areas in Anglesey.

Of those who gain these grades, there is an attainment gap of **24%** between pupils who qualify for free school meals and those who do not – this is slightly lower than the figure for Anglesey at **25%** and Wales which is **33%**.

2.2% of the young people who leave school on Anglesey do not continue to higher or further education, go on to training or find work. This is lower than the Welsh figure of **2.8%**.

25% of the Lligwy and Twrcelyn population have a degree qualification or equivalent, which is slightly higher than the average for Anglesey. Nearly a quarter of the area's population are without any qualifications, which is similar to the rest of Anglesey and Gwynedd.



THE MONEY IN YOUR POCKET

The money available to spend after taxes and the costs of paying for a home by the people of Anglesey, is **£16,238** per person annually, which is £936 higher than the whole of Wales.

In the Lligwy and Twrcelyn, **16%** of primary school pupils claim free school meals, which is lower than the figure for Anglesey. By the time pupils get to secondary school this figure drops slightly to **14%**.

16% of households in Lligwy and Twrcelyn area are in fuel poverty, which is lower than the percentage for the whole of Anglesey, which is 18% but slightly higher than the Welsh figure of 14%.

Of all the households in the area, **6%** are without central heating, which is higher than the average of 5% for Anglesey but three times higher than the Wales figure.

The median property price for Lligwy and Twrcelyn is **£169,250**. In this area, the median household income is **£23,522**, but £37,143 is needed to afford a house at the market entry level. This means **72.3%** of families in Lligwy and Twrcelyn are priced out of the market. This is the highest of all areas in Anglesey, where on average 65% are priced out of the market, with 59% across Wales.



72%

LOCAL
PEOPLE
PRICED
OUT
OF THE
MARKET

MEDIAN
HOUSE PRICE
£169K

MEDIAN
INCOME
£24K

CULTURAL



KEEPING FIT

46% of pupils on Anglesey visit a leisure centre – which is higher than Wales' level of 42%, but lower than Gwynedd which is 53%. Around 50% of the island's children also take part in sports activities 3 or more times a week – this compares to 48% in Wales.

37% of adults on Anglesey say they are active for at least 30 minutes on five or more occasions a week – this is higher than the Wales figure of 31%, but very similar to Gwynedd. This percentage has increased gradually over recent years.



37%
OF ADULTS KEEP
ACTIVE FOR AT
LEAST 30 MINUTES
5 TIMES A WEEK



SPARE TIME

60% of adults on Anglesey have attended an arts event during the year, with 34% having visited a museum and 57% visiting a historical site. This is similar to Gwynedd and the rest of Wales.

57%
VISITED A
HISTORIC
SITE



FOR MORE
INFORMATION...

WWW.GWYNEDDANDMONWELL-BEING.ORG
01766 771000

Ask for the
Gwynedd and Môn Partnership Manager