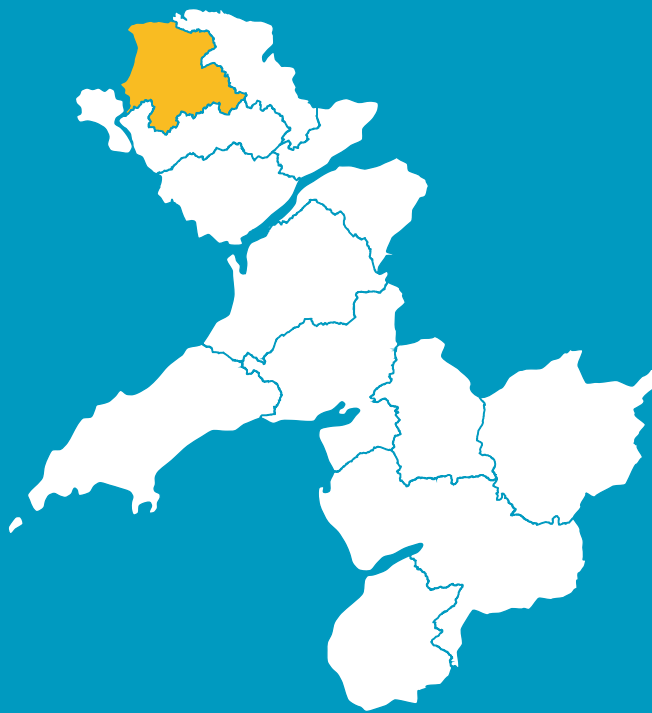


IT'S YOUR AREA. WHAT'S IMPORTANT?

TALYBOLION AREA



WELL-BEING ASSESSMENT GWYNEDD AND MÔN

WANT
TO HAVE
YOUR
SAY?

The new act has established Public Services Boards for each local authority area to make sure that public bodies work together to create a better future for the people of Wales.

For Gwynedd and Anglesey, both Boards have decided to work together, and it's a partnership which includes the local authorities, the fire and rescue service, the health service and Natural Resources Wales.

The Gwynedd and Môn Public Services Board has divided the whole area into 14 smaller areas. Research has been carried out on behalf of the Board on each of the 14 areas to learn and understand more about the well-being of those areas. As well as the data available, we also want to know what you think about your area and community – what's important to you, what's good and what needs improving. **You will have an opportunity to have your say by attending one of the local drop-in sessions or in an online questionnaire. More information and the dates of all local sessions are on www.GwyneddandMonWell-being.org.**

This consultation period ends on December 31st 2016. The hope is that the Board will then have a clearer picture of our communities, what's important to the people in this part of Wales, and how partners can work together to plan services for the future.

THE WELL-BEING OF
FUTURE GENERATIONS
[WALES] ACT CAME INTO
FORCE ON 1ST APRIL
2016. THE PURPOSE OF
THE ACT IS TO IMPROVE
THE **SOCIAL,
ECONOMIC,
ENVIRONMENTAL
AND CULTURAL**
WELL-BEING OF WALES.

THIS IS THE
INFORMATION WE
HAVE COLLECTED
ON THE TALYBOLION
AREA SO FAR. DO
YOU RECOGNISE THIS
PICTURE OF YOUR
AREA?



WHO ARE THE PEOPLE OF TALYBOLION?

Around **6,308** people live in the Talybolion area. This is about 9% of Anglesey's population.

Compared to the rest of the island there are fewer in the Talybolion area between 20 and 35 years old, and slightly more in some of the older age groups, although the pattern isn't consistent. There is a smaller proportion of the population in Talybolion over 80 years old in comparison to the rest of Anglesey and Wales.

The number of people living in Talybolion has **increased by 5%** between 1981 and 2011. This is similar to the growth in Anglesey over the same period but lower than that throughout Wales (11%).

The increase has not been the same in every age group. The number of **people over 80 years old in the area has more than doubled in 30 years** and there has been a significant increase in the population aged between 40 and 80. In comparison, there has been nearly a 30% decline in the number of children under 15 years old and over a 20% drop in the number of people between 16 and 39 years old.

This pattern is expected to continue over the next 20 years with an increase of 80% in the number of people over 80 years old across Anglesey – but it's likely the population under 16 years old will fall by 12%.

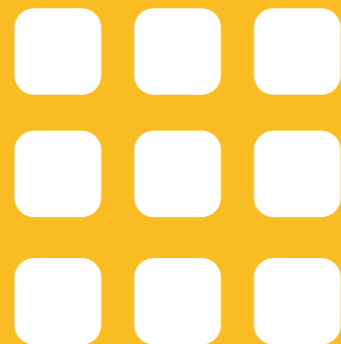
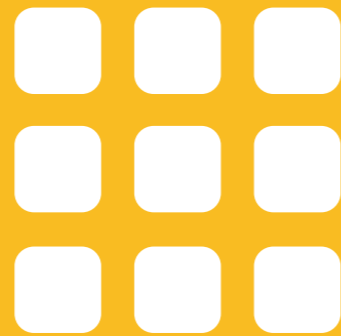
LANGUAGE

According to the 2011 Census **66%** of people in Talybolion can speak Welsh. The percentage has fallen over recent decades and compares to 71% in 1981. The 5% decline is similar to pattern across the whole of Anglesey which has seen figures drop from 62% to 57% over the same period.

Recent figures show that 46% of Anglesey people speak Welsh daily, compared to 11% across Wales.

80% INCREASE AGE 80+

2016 POPULATION OF ANGLESEY 70,000



2036 POPULATION OF ANGLESEY 68,000



HOW GREEN IS THE AREA?

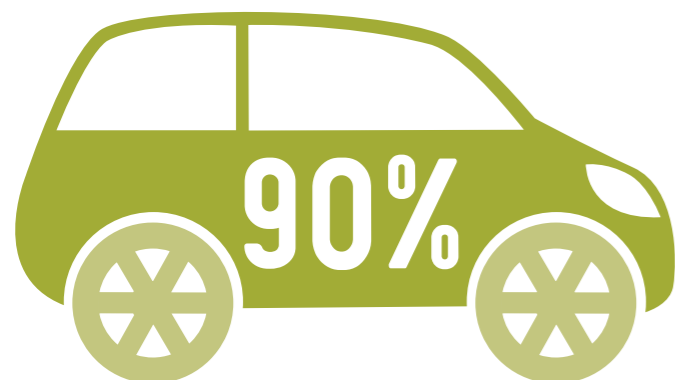
Recycling rates have risen in Anglesey over the last 4 years. By now **59.5%** of waste collected from houses, business and recycling centres in Anglesey is re-used or recycled. This includes bio waste materials which are composted.

The fly tipping rate is higher on Anglesey than the rest of Wales – with 25.3 cases per 1000 head of population reported, compared to 10.2.

Carbon footprint – information shows that **90%** of homes in Talybolion own at least one car, compared with **82%** in Anglesey as a whole and 77% in Wales. Carbon emissions per head of the population for Anglesey are **6.7kt CO₂** which is slightly higher than Wales level of **6.6kt CO₂**.

Climate change causes the sea level to rise which contributes to the risk of flood in the area. In Anglesey, around **970** properties are at risk of floods in 4 areas which have been identified as being in danger of severe flooding.

In Talybolion around 60 houses are under threat of inland flooding by rivers in the area.



CLEAN STREETS?

The cleanliness of our streets is inspected annually by Keep Wales Tidy. Of the streets inspected in this area none achieved Grade A, which means no rubbish or waste. No streets achieved Grade B+ either – a street with no more than three small items of rubbish. All the streets inspected in Talybolion were found with generally no rubbish or waste, except for some small items – this is Grade B. On the whole, across Anglesey the streets tend to be Grade B or B+.



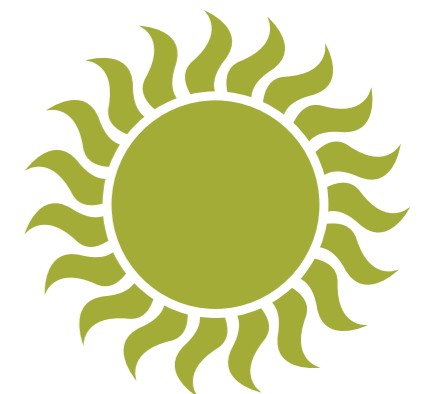
GRADE B
STREETS
100%

THE NATURAL ENVIRONMENT

There are many important habitats on Anglesey which include low and coastal heathland, marshes, woodlands, and ancient hedgerows, as well as some of the largest sand dunes in Wales. This is one of the strongholds for some rare species, such as the Great Crested Newt, the Red Squirrel, Otter, Water Vole and Chough. Protection plans are in place for each one of them.

One of Anglesey's nature reserves is located in this area – **Cemlyn nature reserve**. The lagoon at Cemlyn is considered to be one of the best examples of a sea water coastal lagoon in Wales. It is home to a number of rare species, including lagoon cockles and mud snails. It is also the only site in Wales where the giant isopod has been recorded. Red hares can also be seen here, and weasels and stoats hunt in the reserve. During the summer season, it is home to one of the largest clusters of terns in Wales, which includes the Arctic tern and the sandwich tern.

Porth Swtan beach has been awarded the Blue Flag which means it is amongst the best beaches in the world.



SOCIAL

GOOD HEALTH?

According to 2015 statistics, there are no doctor surgeries at all in the Talybolion area – but generally across Anglesey **1,400** patients are registered per GP. The closest surgeries to the Talybolion area are in Amlwch, Gwalchmai and Holyhead.

If you live in the Talybolion area, it's likely you would have to wait between **5:33** and **10:40 minutes** for an ambulance to respond to a call where there is threat to life.

There is no specific information available on the health of the population of Talybolion. The statistics included in this booklet are for the whole of Anglesey – but give an indication of the health conditions and trends in the county.

Men's life expectancy at birth on Anglesey is **78.7** years, whilst a woman can expect to live until she is **83** years old.

The gap between male and female life expectancy at birth, between those who are most and least privileged in our communities, is substantially less in Anglesey than for Wales as a whole. The gap is as much as 75% less for women and 30% for men.

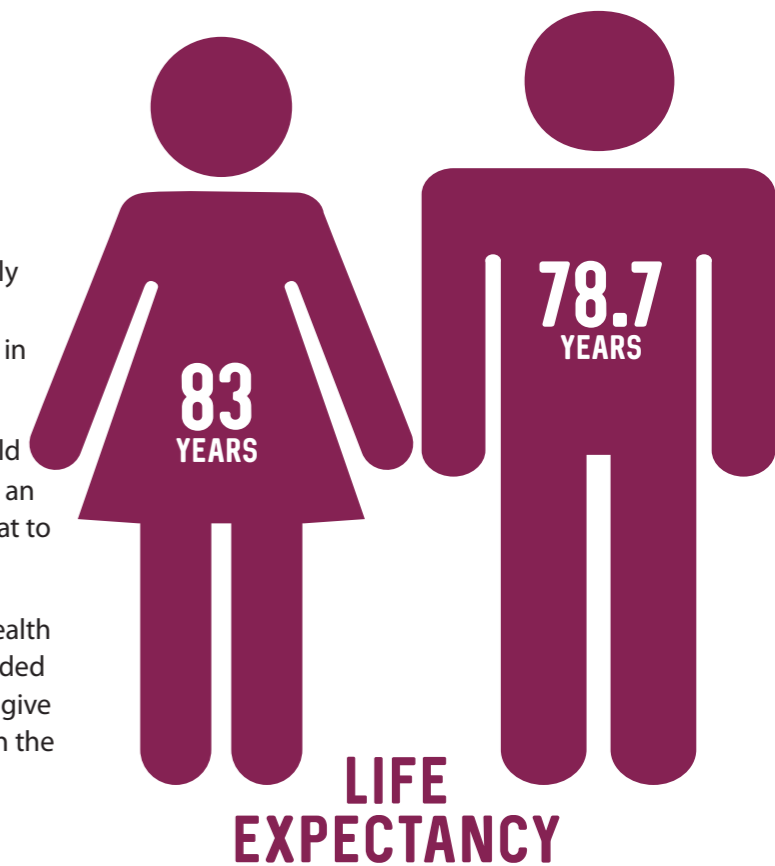
58% of adults on Anglesey are overweight or obese – this is the same as the population of the whole of Wales. The percentage on the island has increased by 3% since 2011, whilst Wales' figure has stayed the same.

On Anglesey, 32% of children aged 4-5 years are overweight or obese - this is higher than the Wales figure of 26%.

Other factors that affect our health are smoking and drinking alcohol. **22%** of people who are 16 or older on Anglesey say they smoke and **38%** of people drink more than **5** small glasses of wine, or around 3 pints of beer, on the heaviest drinking day of the week. This is similar to the rest of Wales and has been consistent over recent years.

The suicide rate on Anglesey of 10.4 for every 100,000 of the population, is lower than the Wales suicide rate which is 12.2 a year.

On Anglesey the teenage pregnancy rate for under 18s is 23.6 per 1000 females aged 15-17. This is similar to the Wales figure.



22% OF PEOPLE OVER THE AGE OF 16 SMOKE



STAYING SAFE



The crime rate for Talybolion per 1,000 head of the population has fallen from **73.1** to **46** between 2011 and 2015 – this is the area with the least crime per head in Anglesey. The number of crimes on the island has also dropped during the same period from **109.2** to **83.4**.

Anti-social behaviour is decreasing but still accounts for **38%** of all crime in the Talybolion area.

81% of people believe it is safe for children to play outside in Anglesey and Gwynedd. The corresponding figure for Wales is **64%**.

In the Talybolion area there are **22** instances of fire every year on average. Around **9%** of these cases are started deliberately, which is the lowest percentage on Anglesey.

22
FIRES

9%
DELIBERATE

KEEPING IN TOUCH

The percentage with access to broadband is increasing annually – now, only **2%** of properties in Anglesey have no access at all.

10% of homes in Talybolion are without a car or van, which is much lower than the figure for the whole of Wales which is 22%.

According to national data, Llanerchymedd, Llanfaethlu a Llanfechell are amongst the 10% of areas in Wales where it takes the most time to travel to basic services such as a pharmacy, grocery shop and doctor's surgery.

Loneliness is a condition which affects all ages, but older people are more vulnerable. In Talybolion, considering the different factors that contribute to loneliness, there is higher risk for people over 65 years old to be lonely in the Bodedern area.

HELPING EACH OTHER

12% of the population in Talybolion provide at least one hour a week of un-paid care. This figure is similar to other areas in Anglesey and the rest of Wales.



JOBS AND THE ECONOMY

Using the measure of how strong and productive the economy is (Gross Value Added) Anglesey's economy is generally weaker than that of Wales. But, the economy of the whole of Wales is weak compared to the United Kingdom.

29% of working people in Talybolion who have no qualification, work in the skilled crafts – this is different to the rest of the island where a higher percentage of people in this group work in elementary occupations.

Of those of working age in Talybolion and with no qualifications, **52%** are economically inactive – this means that they don't work and are not looking for work for various reasons. This is the highest figure amongst all the areas on Anglesey.

The **39%** of people with a degree or equivalent work in the professional field, the pattern is similar to Anglesey and the rest of Wales.

In general, the percentage of people between 16-64 who claim Jobseekers Allowance in Talybolion per month is lower than the Anglesey figure. At its highest last year **2.29%** of working age people in Talybolion claimed the allowance and **2.09%**, at its lowest. Anglesey's figure does not drop below **2.96%**, and it is generally higher compared to Gwynedd and Wales. At least **2.15%** of those aged 16-64 in Wales as a whole claim Jobseekers Allowance at any one time.

The rate of new business start-ups in Anglesey is higher than Gwynedd and very similar to the level in Wales. **65%** of companies on the island stay in business for at least three years. This is higher than the figure for Wales which has **60%**. The rate of business failing is also higher on Anglesey (8%) than Gwynedd (7%), and slightly lower than Wales (9%).

Agriculture is the largest sector in the Talybolion area – it accounts for **29%** of employers. This is the highest of all the areas on Anglesey.

Around **19%** of the working age population work from home in this part of the island. This the highest across Anglesey – and **44%** of the those living in Talybolion travel more than six miles to work. This is high compared to other areas in Anglesey and is higher than the figure for Wales (31%).

The median weekly wage in Anglesey is around **£422 per week**, which is **8% higher** than the median across Wales (£386 per week). Women's pay is **27% lower** than men's pay on the island, but this gap is lower than that for Wales which is 33%.

£422

IS THE MEDIAN WEEKLY WAGE IN THE AREA

65%

OF COMPANIES ARE IN BUSINESS FOR 3 YEARS+

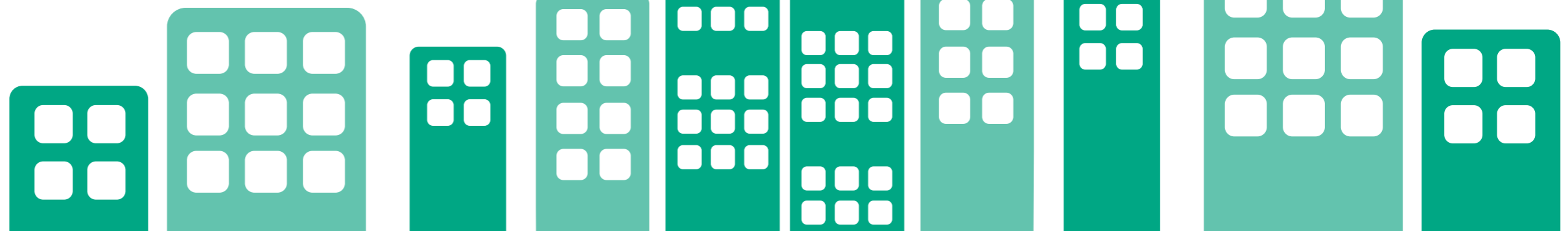
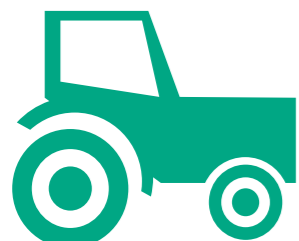
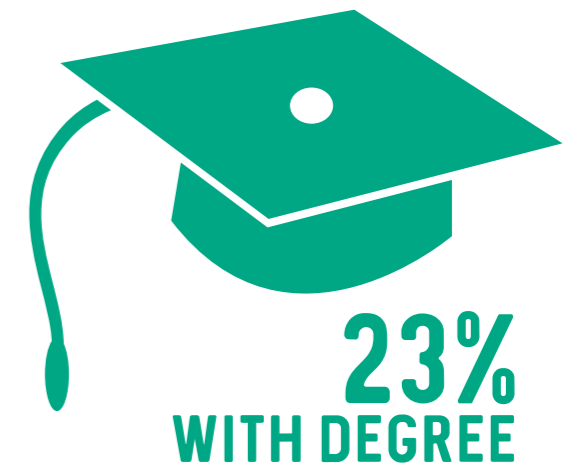
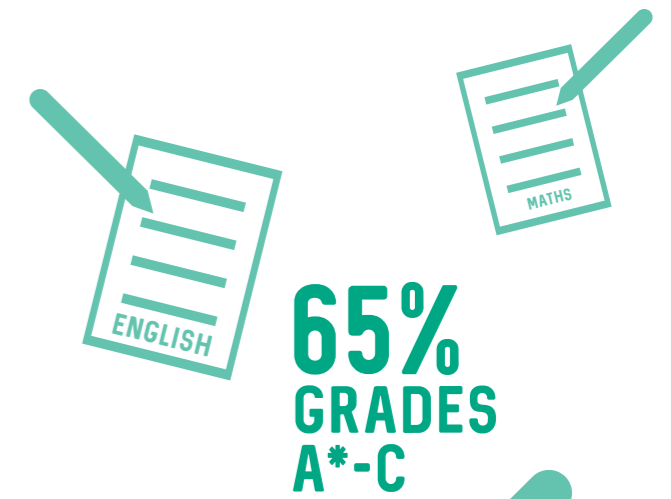
SKILLS FOR LIFE

65% of pupils from Talybolion area get 5 GCSEs **A* to C** in subjects including Welsh or English and Mathematics – which is higher than the figure for Anglesey (**57%**) and Wales (**58%**).

Of those who gain these grades, there is an attainment gap of **17%** between pupils who qualify for free school meals and those who do not – this is lower than the figure for Anglesey at **25%** and Wales which is **33%**.

2.2% of the young people who leave school on Anglesey do not continue to higher or further education, go on to training or find work. This is lower than the Welsh figure of 2.8%.

23% of the Talybolion population have a degree qualification or equivalent, which is slightly lower than the average for Anglesey. There are **26%** of the area's population without any qualifications, which is very similar to Anglesey and Gwynedd.



KEEPING FIT

46% of pupils on Anglesey visit a leisure centre – which is higher than Wales' level of 42%, but lower than Gwynedd which is 53%. Around 50% of the island's children also take part in sports activities 3 or more times a week – this compares to 48% in Wales.

37% of adults on Anglesey say they are active for at least 30 minutes on five or more occasions a week – this is higher than the Wales figure of 31%, but very similar to Gwynedd. This percentage has increased gradually over recent years.



37%
OF ADULTS KEEP
ACTIVE FOR AT
LEAST 30 MINUTES
5 TIMES A WEEK



SPARE TIME

60% of adults on Anglesey have attended an arts event during the year, with 34% having visited a museum and 57% visiting a historical site. This is similar to Gwynedd and the rest of Wales.

57%
VISITED A
HISTORIC
SITE



FOR MORE
INFORMATION...

WWW.GWYNEDDANDMONWELL-BEING.ORG
01766 771000

Ask for the
Gwynedd and Môn Partnership Manager